

EDORA:
European Development Opportunities
for Rural Areas

Led by UHI Millennium Institute,
Inverness, Scotland



EUROPEAN UNION
Part-financed by the European Regional Development Fund
INVESTING IN YOUR FUTURE

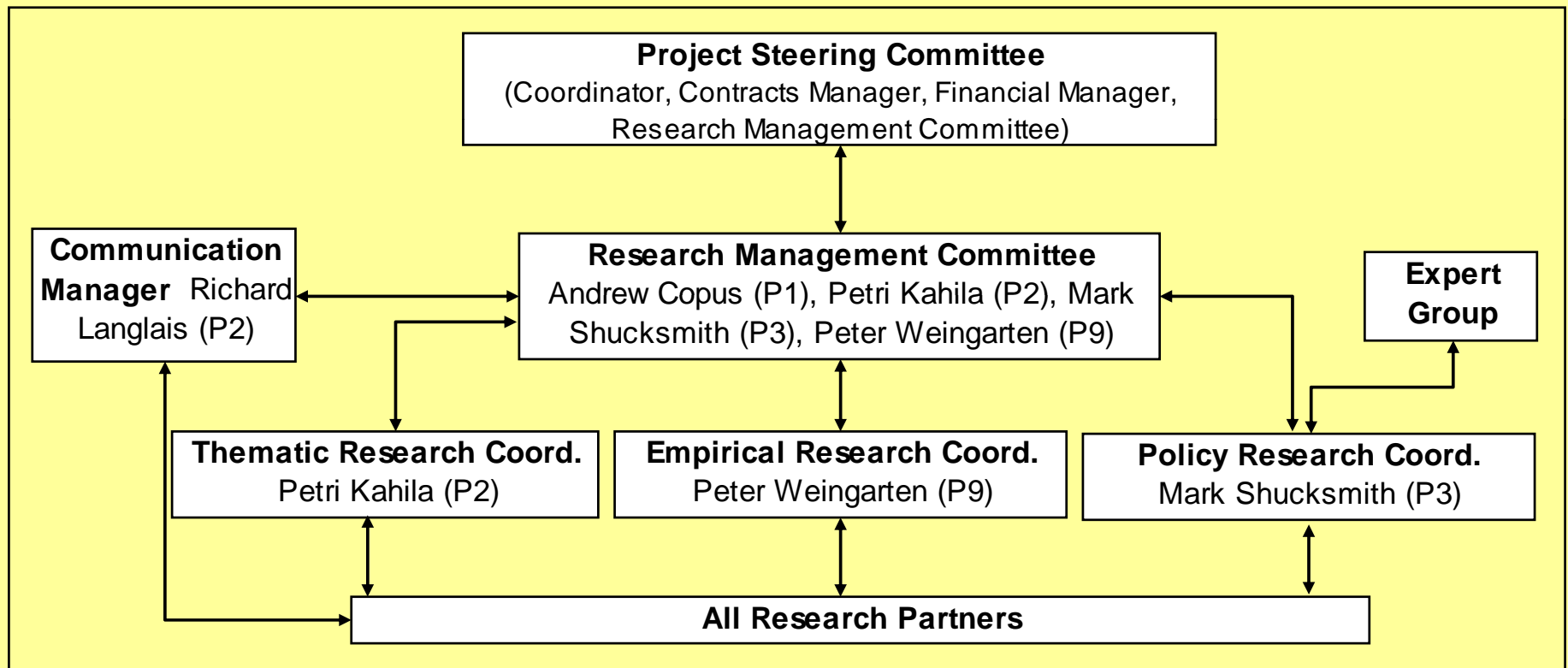
Outline

- The TPG and its Human Capital
- Policy Context
- Conceptual Background
- Overall Approach (Hybrid Deductive/Inductive)
- ESPON Linkages
- Project Structure
- The D.O.C. mantra
- Data Sources and the database
- Typology – an example of the Hybrid Approach
- Current Activity

The TPG

- 1. UHI Millennium Institute, Inverness**
- 2. NORDREGIO, Stockholm**
- 3. University of Newcastle**
4. University of Valencia
5. University of Patras
6. TEAGASC, Dublin
7. University of Gloucester
8. University of Ljubljana
- 9. Von Thunen Institute, Braunschweig**
10. BABF, Vienna
11. Dortmund University
12. Polish Academy of Sciences
13. Hungarian Academy of Sciences
14. Higher Institute of Agronomy, Lisbon
15. Scottish Agricultural College
16. International Organization for Migration, Warsaw

Management Structure



The Expert Group

The Expert Group comprises:

- Prof. Klaus Kunzmann (Berlin),
- Elena Saraceno (Brussels),
- Patrick Salez (Brussels),
- Prof John Bryden (Oslo) and
- Michal Lostak (Prague).

It will meet twice during the life of the project, and will provide feedback and advice draft outputs.

The principal contact person within the consortium will be Mark Shucksmith

The Policy Imperative

Key Policy Events and Issues:

- Fifth Cohesion Report
- Lisbon and Gothenburg Objectives
- Lisbon Treaty
- Territorial Agenda
- Territorial Cohesion Green Paper
- Implementation of 2007-13 rural development programmes
- Drafting of post-2013 Rural development regulation
- Future of Rural Development Policy
- Post 2013 Cohesion Policy
- Review of EU budget 2009

Longer Term Underlying Rural Policy Issues

- Sectoral → Territorial
- Exogenous → (Neo) Endogenous, local capacity and governance
- → Multifunctionality, European model etc
- → Agri-environment
- Implications of enlargement
- Spatial/regional impacts of rural policy - territorial cohesion

The Conceptual Issues

- The focus is upon processes and patterns of rural change and the **diversity** which is the consequence.
- The economic and social environment of the countryside has undergone some profound changes over the past two decades, and change continues. The rural development literature provides a number of distinct but overlapping “narratives” of the **processes of change** e.g.:
 - **Rural restructuring**
 - **Commodification and the consumption countryside**
 - **Post productivism**
 - **Global countryside**
 - **Multifunctionality**
 - **Adjustments to market environment in former communist NMS**
- The consensus is that these processes **increase**, rather than decrease, **diversity/differentiation**.

Increasing Differentiation

The Consumption Countryside

"...Apparently similar areas demonstrate quite different characteristics in terms of key indicators, like net migration, commuting, deprivation, new enterprise formation, the degree of social cohesion or fragmentation, and so on... the character and complexity of rural uneven development has shifted profoundly."

Marsden 1999

Increasing Differentiation

Globalisation (+ EU integration)

"...while all rural localities are touched by global networks and global flows in some way, the intensity of the connections forged, the extent of change effected to the locality, and the degree of manifestation of characteristics of the global countryside, all vary considerably. Globalization, it appears, is more significant in remaking some rural places than others. This differential geography in part reflects structural factors that moderate the exposure of rural communities to global networks and processes,..." Woods 2007

Increasing Differentiation

Rural areas in the New Member States

"...rural regions... in central and eastern Europe have also had to cope with the transition from the socialist central planning systems towards a democratic society and a market economy.... Due to the more egalitarian policies of the socialist systems, the transition processes have additionally contributed to a stronger economic differentiation of the societies in central and eastern Europe and to an increase of rural-urban disparities. In the socialist era, regional or rural policies requiring decentralised decision making, i.e., local actors and institutions, only played an insignificant role in the CEECs." Network of Independent Agricultural Experts in the CEE Candidate Countries 2004

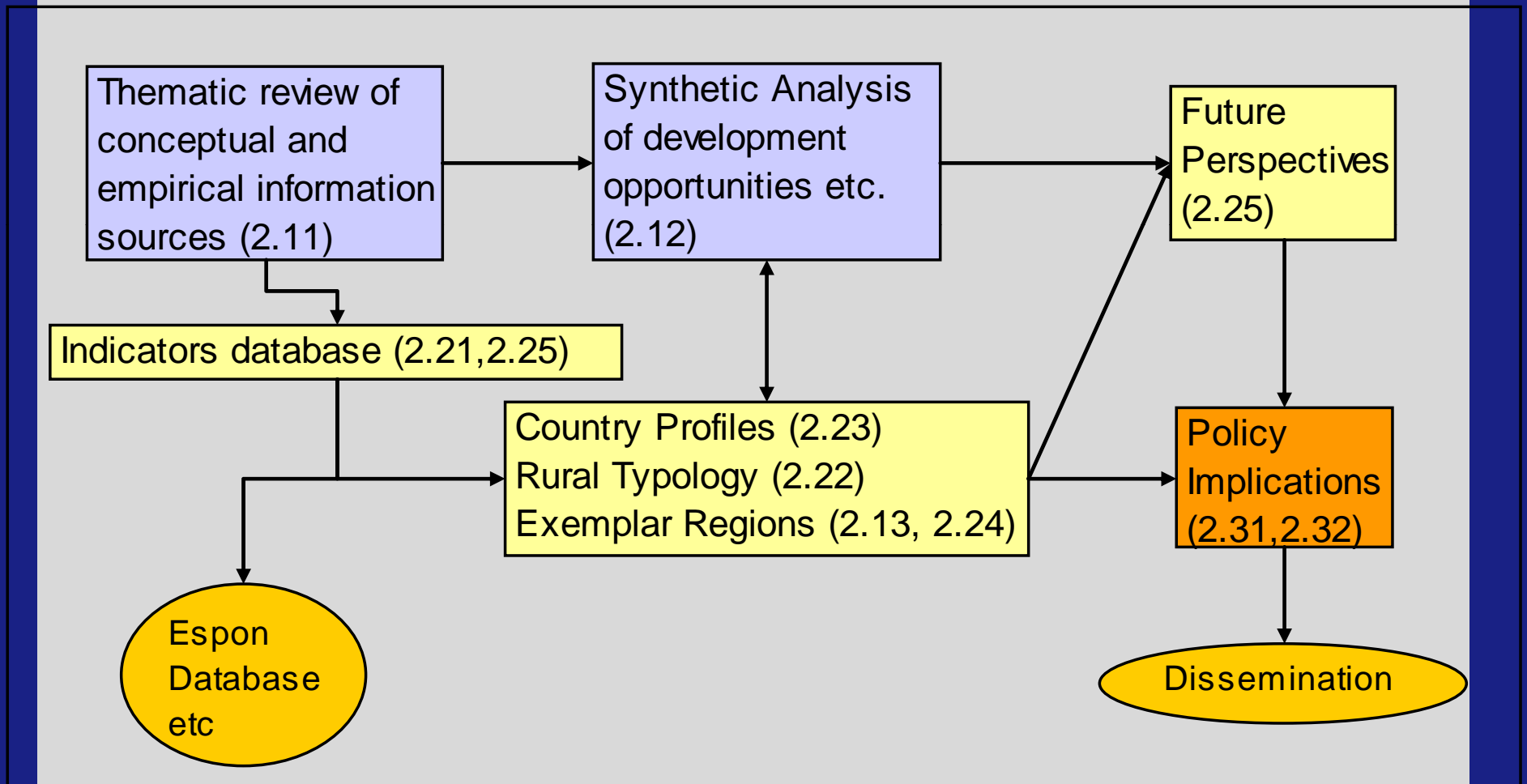
The EDORA Approach

- Need a strong evidence base.
- Rural data availability is strongly influenced by the agrarian rural development tradition.
- Being driven by the data availability is risky.
- Need to structure the project to avoid “slipping into well-trodden paths...”
- A hybrid “deductive/inductive” approach – territorial concepts and theory first, leading data requirements and empirical analysis.
- This principle followed in overall project structure, and within individual tasks.

ESPON Programme Linkages

- **Key 2006 projects**
- 1.1.2 Urban-Rural Relations in Europe
- 1.1.4 Spatial effects of demographic trends and migration
- 1.3.2 Territorial trends of the management of the natural heritage
- 1.3.3 Impacts of cultural heritage and identity
- 2.1.3 Territorial impact of CAP and Rural Development Policy
- 3.2 Spatial scenarios in relation to the ESDP and EU Cohesion Policy
- **ESPON 2013:**
- Consortium involvement in TIPTAP, Demography and ReRisk.
- Will establish contact with EUROISLANDS, PURR and TD projects.
- **FP7 etc.**

EDORA Project Structure



2.1 Conceptual Activities

Activity 2.11.

Review of current situation and recent trends (literature, hypotheses):

- (a) Demography
- (b) Employment
- (c) Rural business development
- (d) Rural-urban relationships
- (e) Cultural heritage
- (f) Access to services of gen. interest
- (g) Institutional capacity
- (h) Climate change
- (i) Farm Structural Change

Activity 2.12.

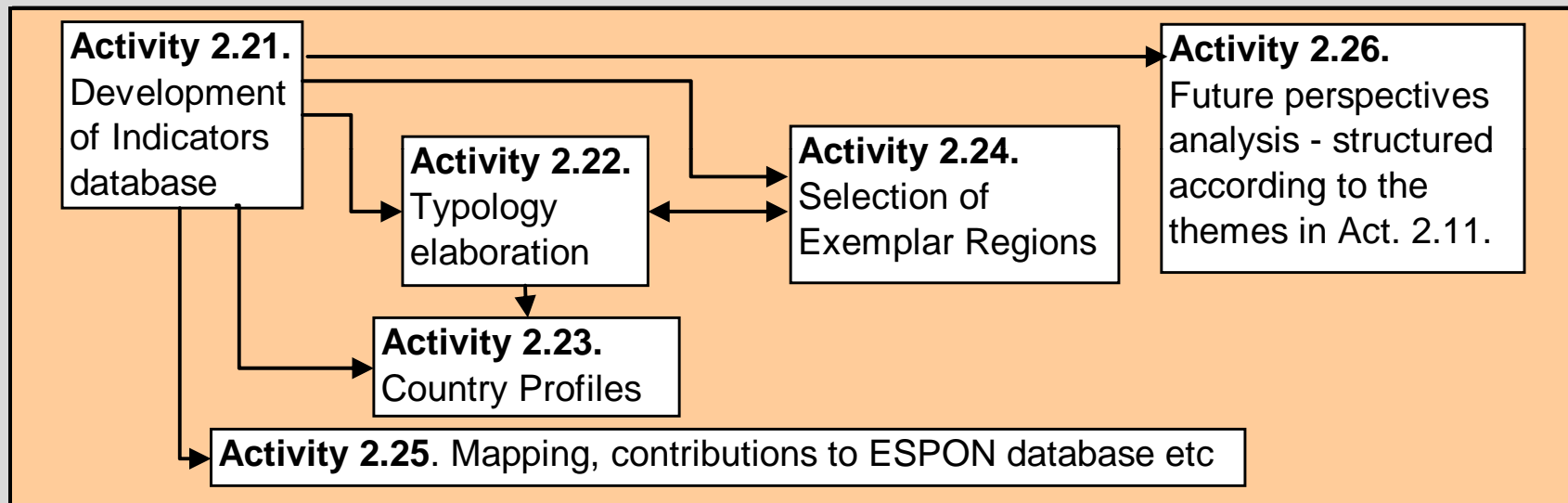
Identification of development opportunities, drivers for development, barriers to success etc.

Activity 2.13.

Holistic narrative of Exemplar Regions

Note: Links to other project phases omitted for the sake of clarity.

2.2 Empirical Activities



Note: Links to other project phases omitted for the sake of clarity.

2.3-2.4 Policy Activities etc.

2.3 Policy Related Activities

Activity 2.31.

Establish potential for territorial cooperation (U-R and R-R)

Activity 2.32.

Implications for orientation of Cohesion policy

2.4 Other Activities

Activity 2.41. Member State Data Collection

Activity 2.42. Expert Group

The D.O.C. Mantra

To keep us focused...

Three “core concepts” will run through all EDORA project activities:

- (i) **D**rivers of rural change.
- (ii) **O**pportunities for rural development.
- (iii) **C**onstraints, or barriers, which prevent or delay the exploitation of the opportunities.

Main Data Sources

- ESPON database
- REGIO database
- Corine
- Member state statistical offices
- Rural Development in the EU Reports 2006, 2007, 2008?
- GISCO
- European Cluster Observatory
- Etc.

Challenges:

- Strategies for filling gaps
- Changed NUTS boundaries
- MS Data – harmonisation etc

Goal:

- A database of Indicators, (D.O.C) rather than just data

Typology Elaboration

- Example of “hybrid” Deductive/Inductive approach
- DG Regio (Modified OECD) typology provides basic urban-rural framework for the project
- “Elaboration” involves adding further dimensions to the typology which relate to different development paths/kinds of success
- The development paths/kinds of success will be established through the analysis of “Exemplar Regions” (Task 2.13 and 2.14)
- Key indicators will be identified as part of the thematic/conceptual analysis (2.11 and 2.12).

Choice of Exemplar Regions and Typology Elaboration

Possible Types	PU	INTERMEDIATE		PREDOMINANTLY RURAL	
	1	Close to a city 21	Remote 22	Close to a city 23	Remote 24
a In-migration					
b Diversifying Economy					
c U-R links - Commuting?					
d Cluster economy					
e Heritage activities					
f Tourism growth					
g New services					
h Institutional capacity					
i Agro-food development					
j ?					
k ?					
l ?					

Current Activity

- Further elaboration of the methodology (Inception Report).
- Main focus of activity is currently 2.11. (Thematic/Conceptual analysis) Draft reports due in January. Proposals for key indicators for each theme.
- Initial work setting up the database (2.21).
- Typology (2.22) and Exemplar Regions (2.13/2.24) – elaboration of methodology, discussion of key types/exemplar regions.
- Country profiles (2.23) – initial preparations, planning/structuring.
- 2.12 (Synthesis of D.O.C.) will begin in February
- Future perspectives (2.25) inputs to ongoing activities – starts in April.

Future Perspectives: Background Questions

- What does the short and medium term future of different types of rural area look like?
- Will it accord with the vision of rural areas set out in core policy documents?
- Is the policy vision coherent?
- Are there gaps in the policy vision vis-à-vis existing or potential development opportunities?
- What steps are necessary to achieve the policy vision?

Future Perspectives: Methodology Outline

- Review of core EU, rural related, policy documents and relevant academic literature
- Assessment of the contemporary status of different types of rural areas (2.11 / 2.22 / 2.23)
- Assessment and classification of the dominant drivers of change in the different rural areas (2.11 / 2.22 / 2.23)
- Future perspectives of short and medium term implications of the contemporary drivers of change
- Assessment of whether this scenario accords with the stated policy vision
- Future perspectives of rural areas resulting from development of their potentials and increased territorial cohesion (within the context of climate change.)
- Identify steps (policy) required to achieve this scenario.