

Policy questions for Policy lab 3: Urban-rural partnerships

ESPON-EGTC Targeted analysis project

**SPIMA – Spatial Dynamics and strategic planning in
Metropolitan Areas**

Martina Macáková, IPR Prague

Jaromír Hainc, Ph.D. ,Prague

Bratislava, 2016/12/07

Cities in SPIMA project / EUROCITIES – MAIA 1.0/

Brno

Prague

Oslo

Torino

Lille

Lyon

Brussels

Terassa

Vienna

Zurich

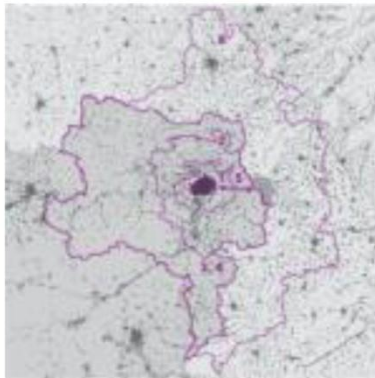


Stichting Wgaeningen
Research (Alterra)

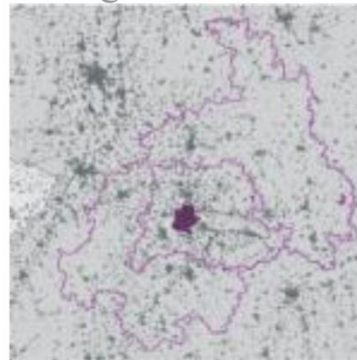
1)

What possible governance tools could strengthen the urban-rural linkages in order to overcome administrative fragmentation and rigidity?

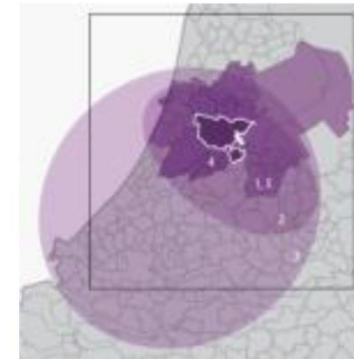
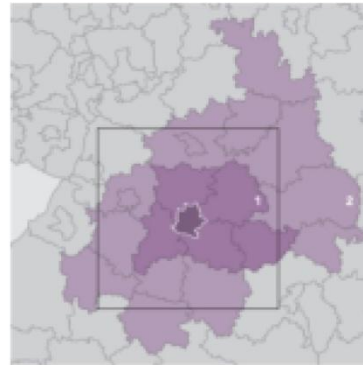
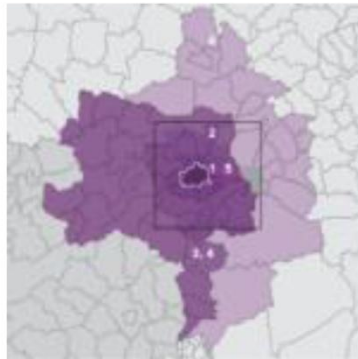
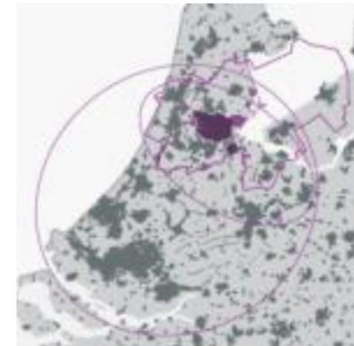
Vienna 400km



Stuttgart 200km



Amsterdam 100km



Source: Peter Austin, Oslo, 2013

3)

How can Central Eastern European cities and regions learn from existing urban-rural linkages?



Thank you for your input and attention!