



**Attraction through strategy for development,
aiming for a human architectural scale and value in Urban
planning.**



A new North Sweden is growing...

...and Skellefteå is in the middle:
Centrally located in the middle of a
region which forms a catchment area
of some 450,000 inhabitants and 50
000 students.

Skellefteå:
1 h from Stockholm.
2nd wealthiest municipality in
Sweden.
Population: approx. 74 000



Assets.

Large private business sector, 65 % of the employed population.

Host a large part of Sweden's energy resources



6500
79%

Boliden:
18 000 kg
gold
2/3
electronic
scrap.



*Wood building
strategy*



Leading region
in mining,
forestry and
energy



New high-tech
industries and creative
companies.
Fastest growing
branches are **company
services** and **tourism**.

SKELL
EFTEA

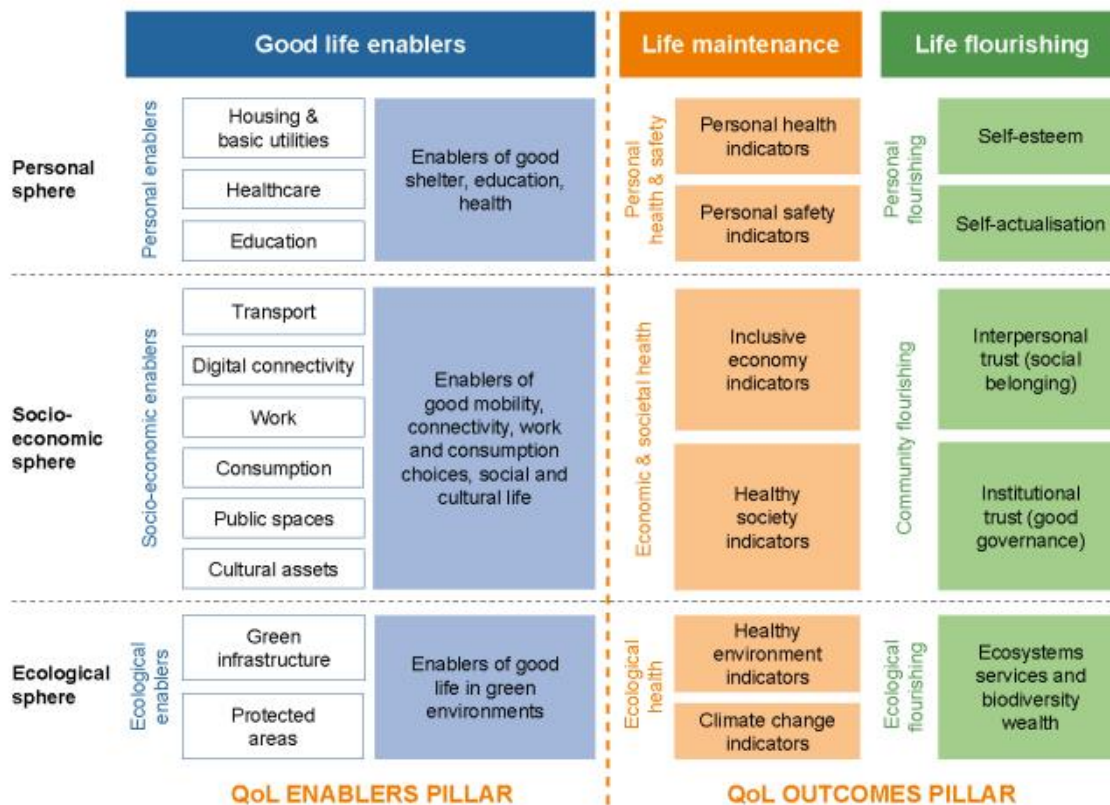
Global goals, local strategy



Sustainable strategies in Skellefteå

- Skellefteå 2030
- Energy and climate strategy
- Environmental programme
- Guidelines for sustainable building
- Wooden strategy
- Public health programme
- Childrens right
- Accessibility goals
- Goals for transportation
- Gender equality

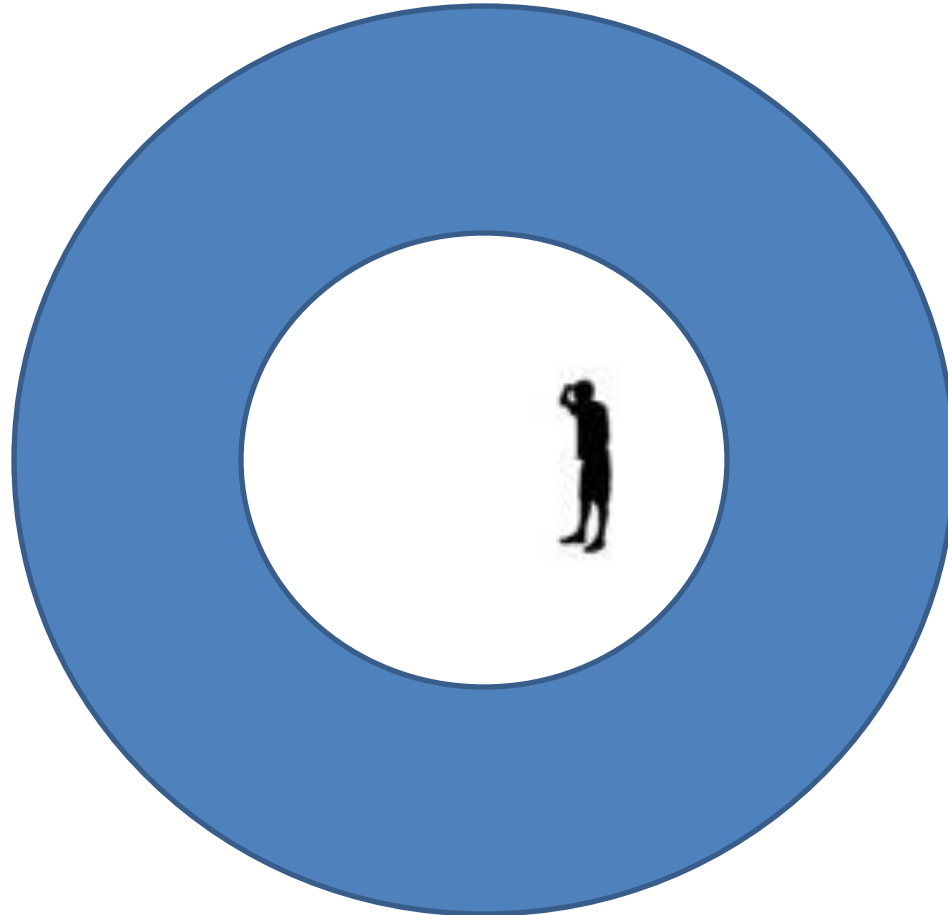
Figure 3.1
Conceptual map for territorial quality of life



Source: ESPON, 2020b

Challenge

**Human habitat and ability in
focus.....**



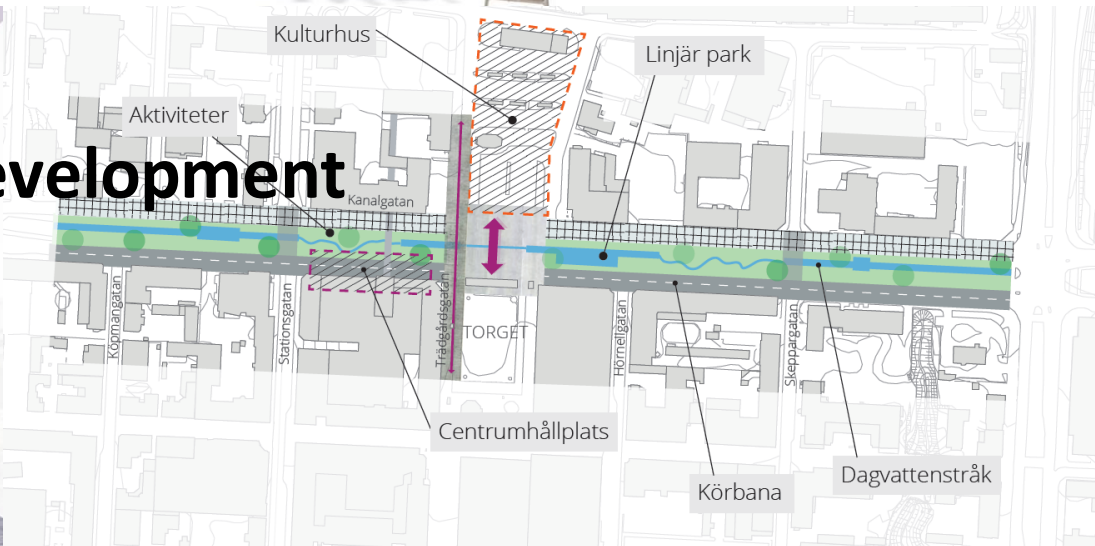
**.....In balance with the best use of the
resources at hand in a particular space**

Creating and enhancing sustainable architecture to add
a long run contextual value

**Human habitat, human scale – how to
design and relate to sustainable
humanspace**



City development



Sida vid sida, White arkitekter



A city for humans is a city that emerge from the human senses.

- The overall order & human proportion
- Sence and fine scale
- Movements, flow and the sensation of speed
- Detail- readability and orientation
- The human interface, male and female
- Life, space and buildnings
- Light and shadow



Utbyggnadsriktningar
FÖP Skellefteå 3.0

- Bostäder, utred glesare förtätning i byastruktur
- Bostäder/blandstad, utred tätare stadsstruktur/service
- Verksamhetsområden, utred lämplig inriktning/typ
- Gröna sammanhängande stråk, omfattning/bevara/utveckla
- Utred förtätning, servicenoder, skola/vård/omsorg osv.



Thank you!

Therese Kreisel Architect SAR/ MSA
Head of Urban planning
Therese.kreisel@skelleftea.se

www.skelleftea.se

SKELLEFTEA

Make room for ideas.