

ESPON



Co-funded by
the European Union
Interreg



SPANISH PRESIDENCY
COUNCIL OF THE EUROPEAN UNION

ESPON Seminar

Small and medium-sized cities in Europe

15-16 November 2023 in Cuenca, Spain

*Italian experience of inner areas in
Lombardia Region*

Matteo Bianchi. ANCI Lombardia



Italian experience of inner areas in Lombardia Region

■ 1

The Regional Strategy for Inner Areas:
«Counter-Exodus Agenda»

■ 2

Inner areas and ANCI Lombardia:
a strategy for local development

■ 3

Inner areas as a laboratory for
local governance

1

The Regional Strategy for Inner Areas: «Counter-Exodus Agenda»

The Regional Strategy for Inner Areas: «Counter-Exodus Agenda»

With the DGR XI/5587 Lombardy Region adopted a regional Strategy for inner areas: **the Counter-exodus Agenda.**

The regional Strategy aims to “build a system in which all territories **have equal access and opportunities for development**” and states that the fundamental elements for territorial attractiveness are “**solid social cohesion, an adequate network of basic services** (starting with social and health services), and an adequate offer of cultural, artistic, sporting and recreational proposals”.

IN NUMBERS:

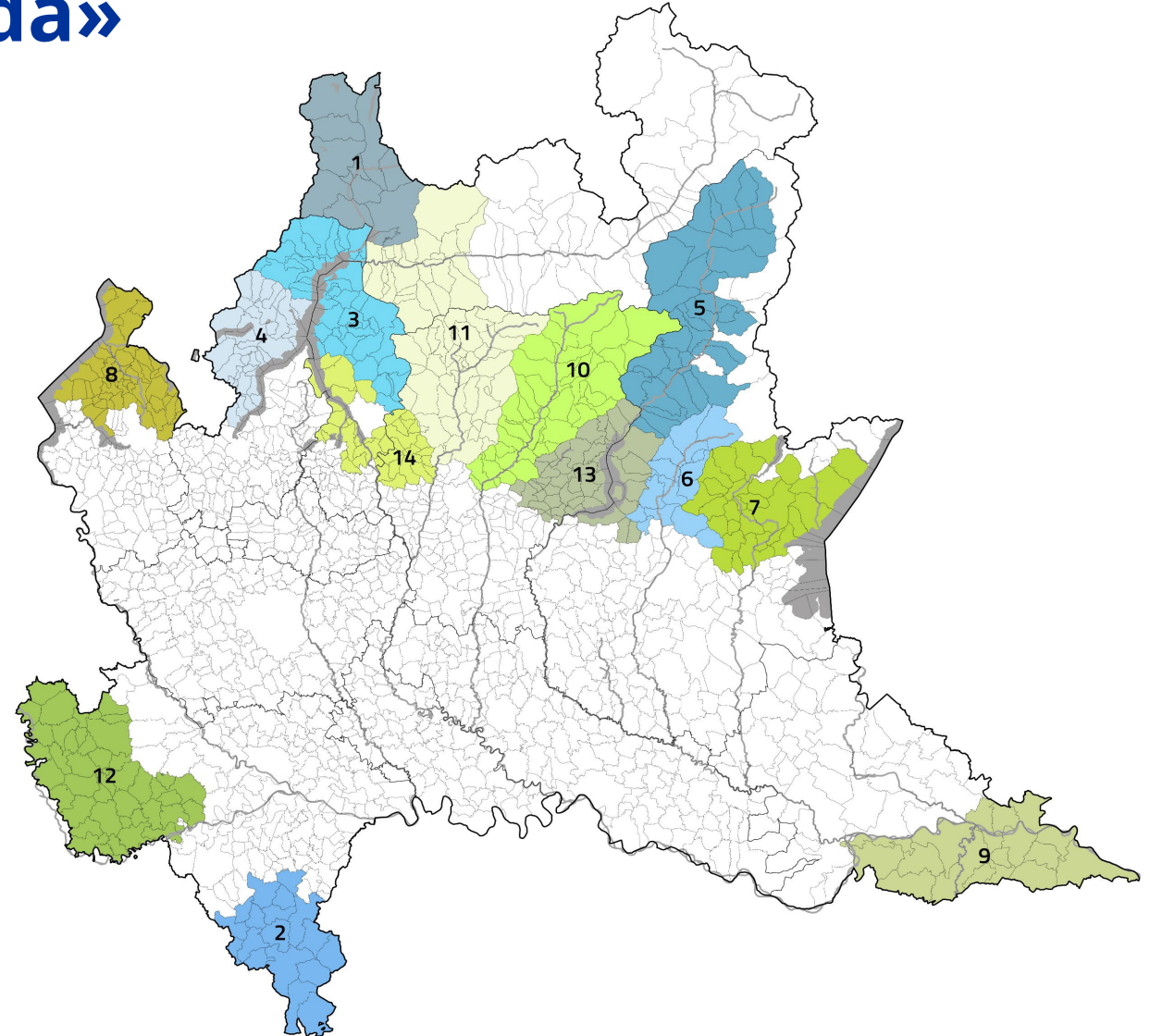
- 14 Inner areas
 - 6 national Inner areas
 - 8 regional Inner areas
- 488 Municipalities
- 19 Mountain communities
- >1mln. inhabitants

The Regional Strategy for Inner Areas: «Counter-Exodus Agenda»

- 1 Valchiavenna
- 2 Oltrepò Pavese
- 3 Alto Lago di Como e Valli del Lario
- 4 Lario Intelvese e Valli Lario Ceresio
- 5 Val Camonica
- 6 Val Trompia
- 7 Val Sabbia – Alto Garda
- 8 Piambello Verbano
- 9 Oltrepò Mantovano
- 10 Val Seriana e Valle di Scalve
- 11 Valle Brembana e Valtellina di Morbegno
- 12 Lomellina
- 13 Laghi Bergamaschi – Sebino Bresciano
- 14 Lario Orientale – Valle S. Martino e Valle Imagna

**National
inner areas**

**Regional
inner areas**

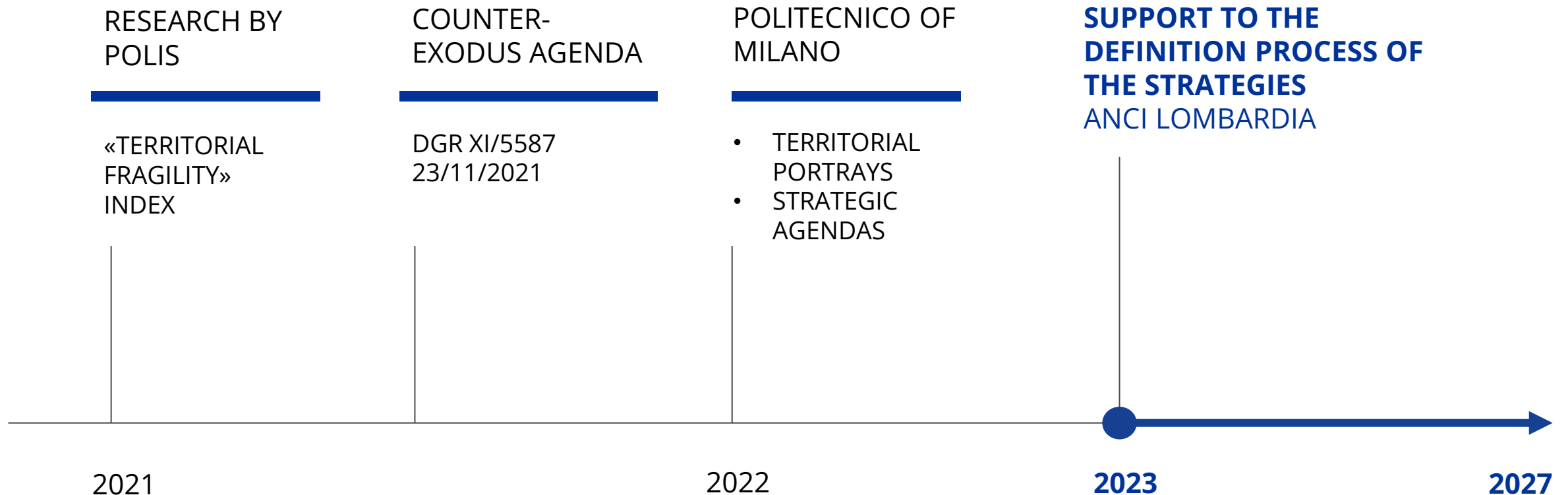


2

Inner areas and ANCI Lombardia: a strategy for local development

Inner areas and ANCI Lombardia: a strategy for local development

THE COUNTER-EXODUS **AGENDA** FIRST STEPS



The support of ANCI Lombardia to the Inner Areas

ANCI Lombardia will carry out activities to **support the 14 identified areas in collaboration with Region Lombardia in the implementation of the Counter-Exodus Agenda.**

Three phases of activities:

1. Definition of local strategies
2. Implementation of local projects
3. Monitoring and reporting

In the first phase ANCI Lombardia will support the 14 areas in the definition of local Strategies

Once defined, ANCI Lombardia will support the area throughout the implementation phase both through direct technical assistance and capacity building activities.

3

Inner areas as a laboratory for local governance

Inner areas as a laboratory for local governance

The **488** municipalities involved in the National Strategy are mostly small depopulated areas with structural deficits that often result into the lack of essential services (education, health and mobility).

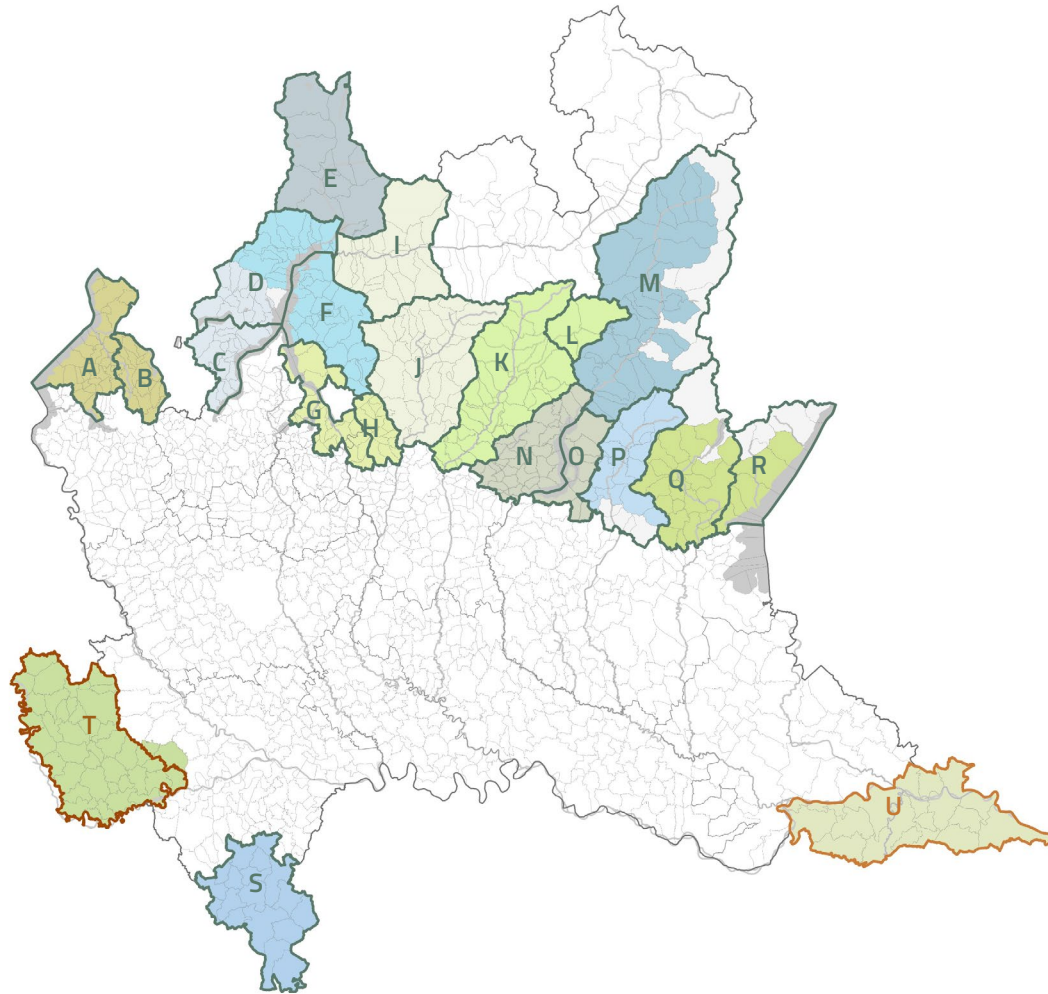
The involvement of a Regional body - such as ANCI Lombardia - can **guarantee the provision of skills and knowledge** to support the local administrations in the implementation phase of the strategy.

For each area, the **Lombardy Region has identified supra-local bodies as reference entities**. Each body enables the definition and implementation of the local development strategy in their area.

The most common supra-local entity is the Mountain community. In non-mountainous areas two different form of upra-local entities have been identified:

- > Consortium of the Oltrepò Mantovano
- > LAG (Local Action Group) Risorse Lomellina.

Italian experience of Inner Areas in Lombardia Region



- Ⓐ Mountain Community Valli del Verbano (VA)
- Ⓑ Mountain Community Piambello (VA)
- Ⓒ Mountain Community Lario Intelvese (CO)
- Ⓓ Mountain Community Valli del Lario e del Ceresio (CO)
- Ⓔ Mountain Community Valchiavenna (SO)
- Ⓕ Mountain Community Valsassina Valvarrone Val d'Esino e Riviera (LC)
- Ⓖ Mountain Community Lario Orientale Valle S. Martino (LC e BG)
- Ⓗ Mountain Community Valle Imagna (BG)
- Ⓘ Mountain Community Valtellina di Morbegno (SO)
- Ⓙ Mountain Community Valle Brembana (BG)
- Ⓚ Mountain Community Valle Seriana (BG)
- Ⓛ Mountain Community Val di Scalve (BG)
- Ⓜ Mountain Community della Vallecamonica (BS)
- Ⓝ Mountain Community dei Laghi Bergamaschi (BG)
- Ⓞ Mountain Community del Sebino Bresciano (BS)
- Ⓟ Mountain Community della Valle Trompia (BS)
- Ⓠ Mountain Community della Valle Sabbia (BS)
- Ⓡ Mountain Community Alto Garda Bresciano (BS)
- Ⓢ Mountain Community dell'Oltrepò Pavese (PV)
- Ⓣ LAG Lomellina (PV)
- Ⓤ Consortium Oltrepò Mantovano (MN)

The Mountain communities

Mountain communities are unions of municipalities, **local authorities established between mountainous and partially mountainous municipalities**, that may belong to different provinces.

Mountain communities are responsible for the development of their area. They exercise their own functions, conferred functions and some municipal functions.

They perform functions such as the promotion and enhancement of the area, as well as the management of special interventions.

IN NUMBERS:

- **23** Mountain communities in Lombardy
- **19** Mountain communities in inner areas

Norms:

- art. 27, d.lgs. 18 august 2000, n. 267 (TUEL)
- art. 1., l.r. 27 june 2008, n. 19

INNER AREA: Oltrepò Mantovano

The Lombardy Region has identified the local Consortium as the reference body for the '**Oltrepò Mantovano**' Inner Area.

This is a body established for the associated management of one or more municipalities functions.

The Consorzio Oltrepò Mantovano (COM) performs the functions such as: tender procedures for the purchase of goods or services for the municipalities, writing proposals and projects for the area, promoting sustainable development and tourism.

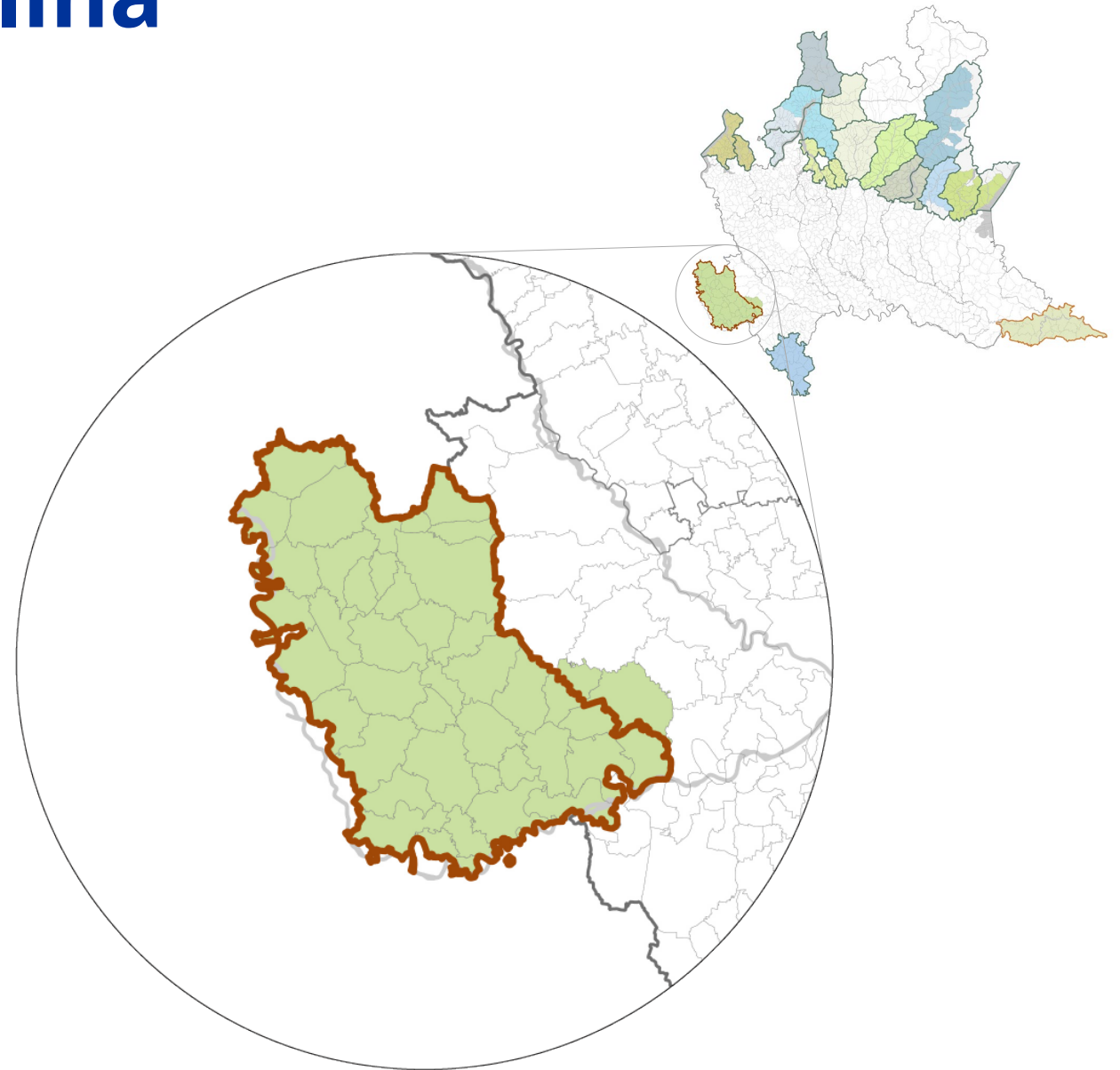


INNER AREA: Lomellina

There is no supra-local body in the Lomellina area that performs functions similar to those of a Mountain communities or the Consortium.

Therefore, the **Lombardy Region has identified the LAG “Risorse Lomellina” as the reference body for this area.**

LAGs are bodies made up of public and private stakeholders who work together on strategic decisions for local development, the enhancement and promotion of the territory.



Assistance instruments for Local Authorities

Both for the Lombardy Region and ANCI Lombardia, **the strategy of internal areas is a laboratory for the development of actions and forms of governance** to support local authorities.

Forms of governance are addressed at the regional level with the aim of fostering a more effective and efficient use of the municipalities' resources.

Two examples:

- Competence Centres, a tool to activate local authorities to develop skills, services of citizens.
- SEAV (Servizio Europa d'Area Vasta) project dedicated to the support and development of collaborations between municipalities for European planning.

ESPON



Co-funded by
the European Union
Interreg



espon.eu   

Thank you!

Please visit us at www.espon.eu