

// Assessing Integrated Territorial Development Strategies (ITI)





Integrated Territorial Investments

Integrated Territorial Investments

- **Integrated Territorial Investment (ITI)** is a new tool introduced in the Common Provision Regulation (CPR) for use during the European Structural and Investment Funds (ESIF) programming period. Its aim is to **make it easier to run territorial strategies that need funding from different sources**. ITI also promotes a more local or ‘place-based’ form of policy making.
- It is important to note that ITI can be used as both an **instrument for promoting integrated actions for sustainable urban development**, and as a tool for **supporting integrated approaches** in any other type of territory

(Source: European Commission)

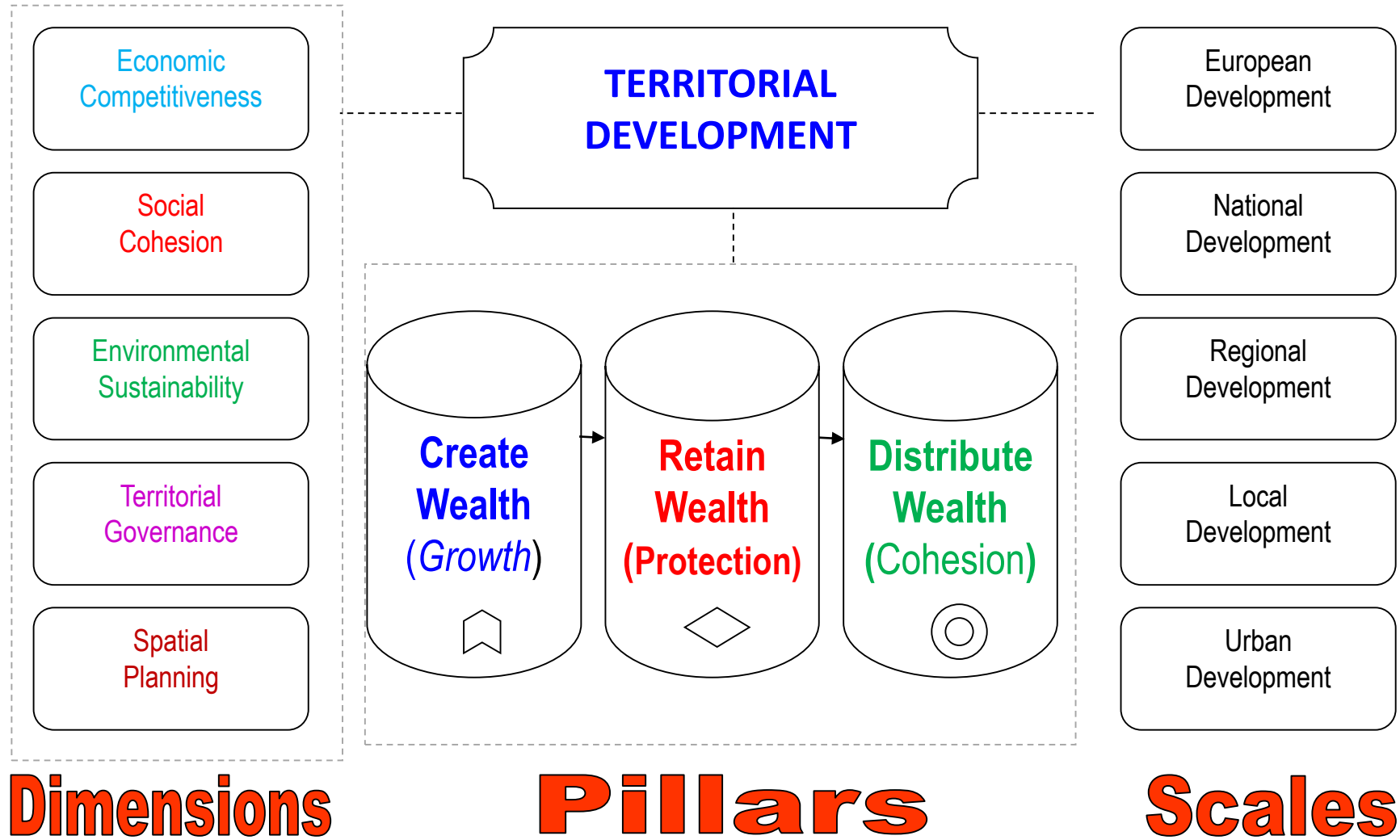
Integrated Territorial Investments

- “The integrated territorial approach is a **relatively new way of policy making** in which the needs and potential of a given place are the starting point. Elements of this approach have been included in the 2014-2020 period of cohesion policy, most visibly through the introduction of Integrated Territorial Investments” This new tool can be applied in “metropolitan, urban-rural, deprived neighbourhood and a cross-border” areas.
- ITI can **offer immediate added value** in programming. It can result in a more efficient implementation of territorial strategies by improving coordination between ESI funds. From a more strategic perspective, ITI can also **increase administrative capacity** to deal with integrated territorial development at the level most appropriate for carrying out urban and territorial strategies.

2

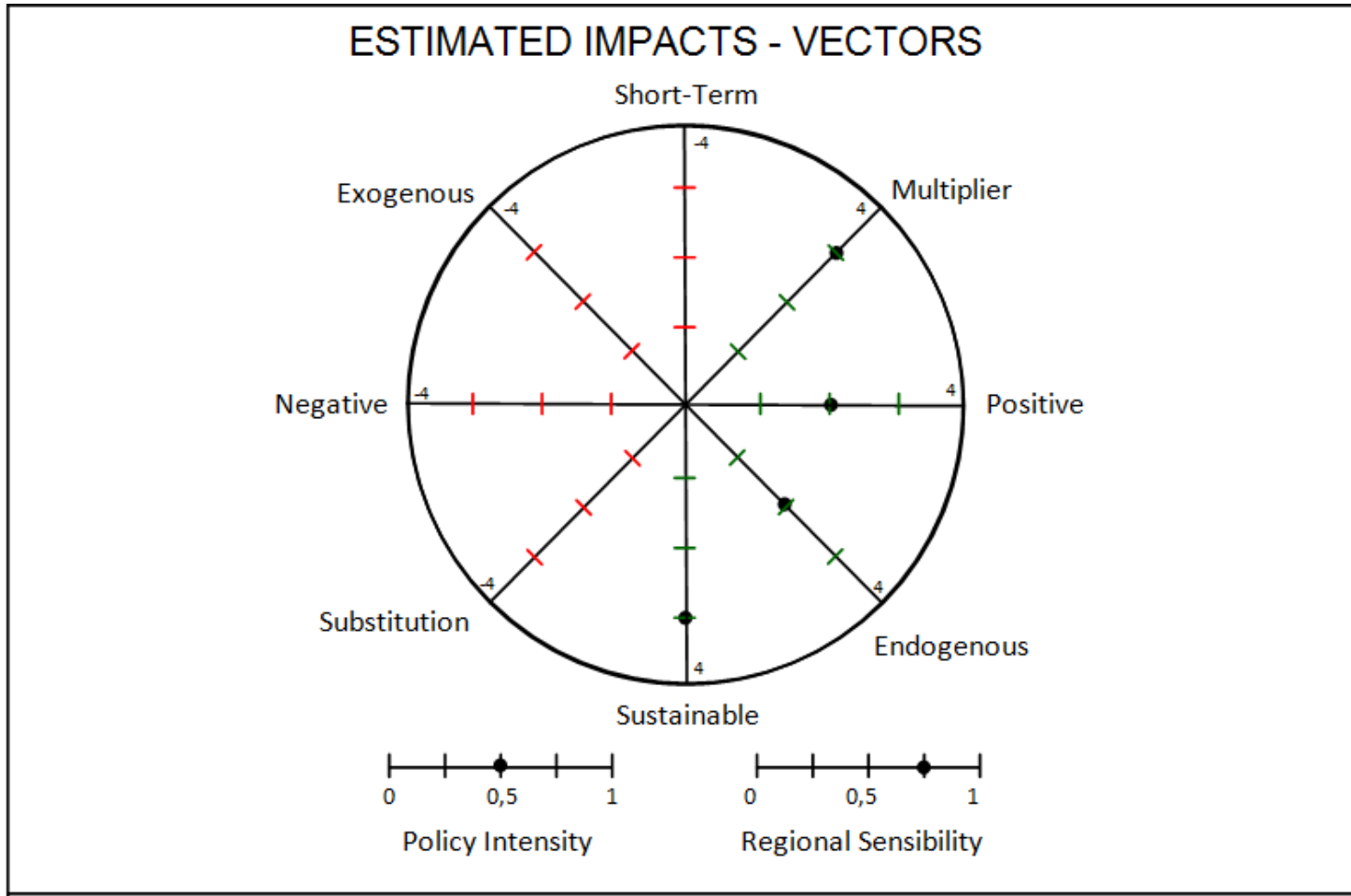
A Territorial (Holistic) Approach

TERRITORIAL DEVELOPMENT DIMENSIONS



USING TIAS?

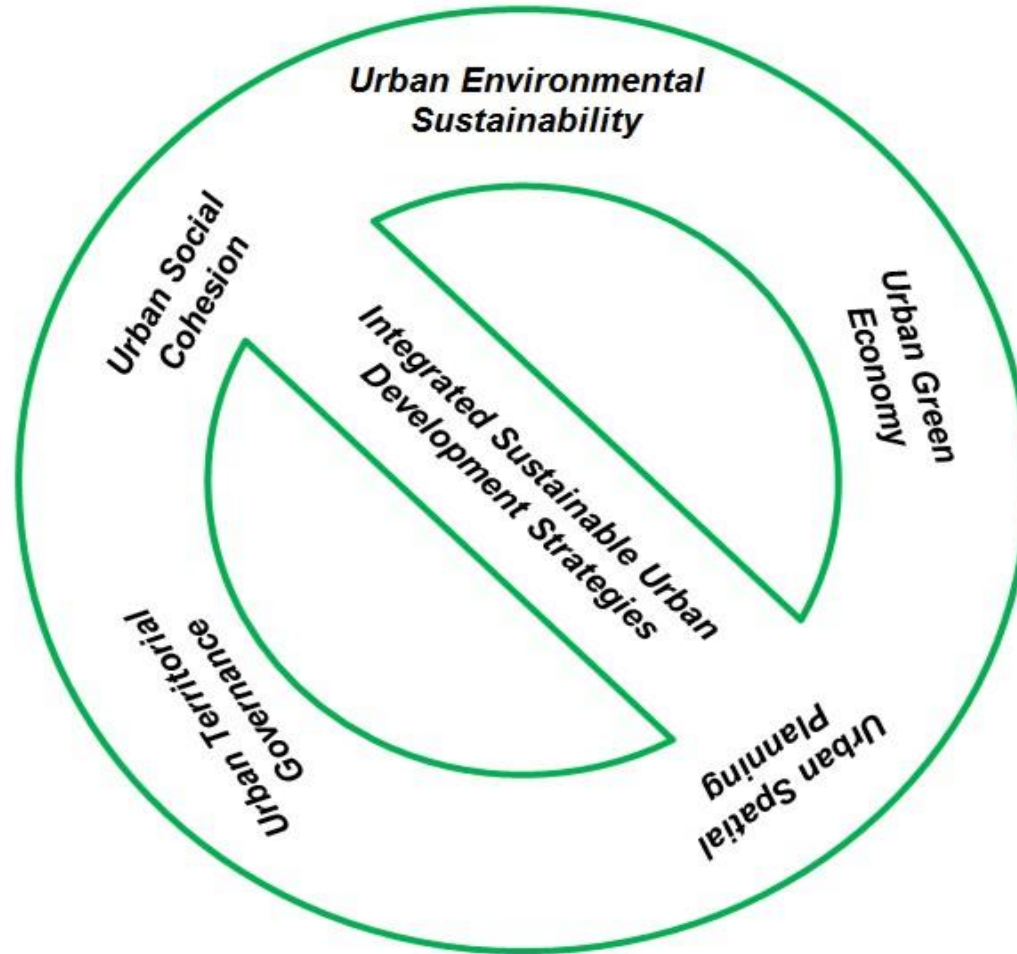
TARGET TIA



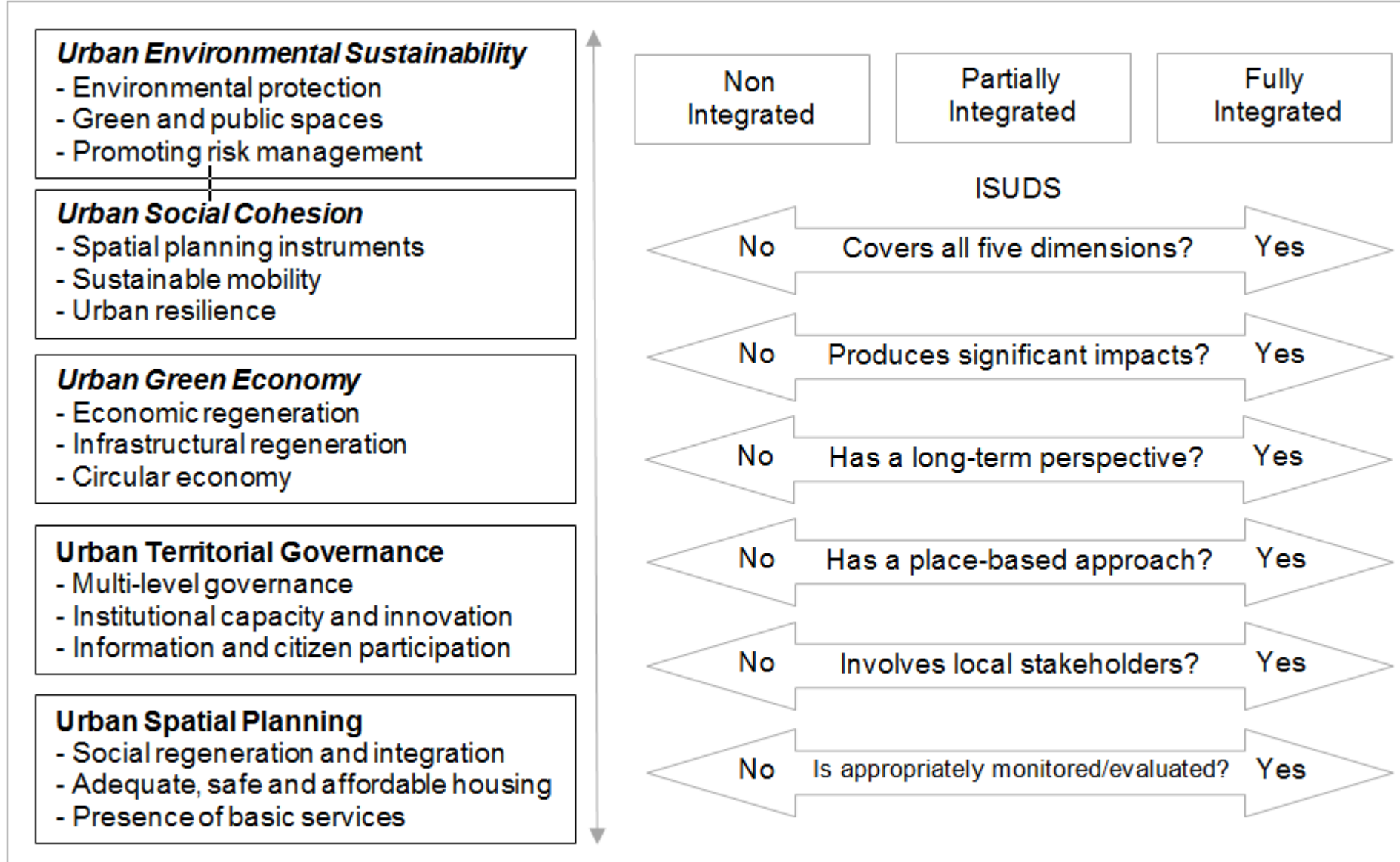
3

ITI Evaluaiton Methodology

Analytic Dimensions for Assessing ITI



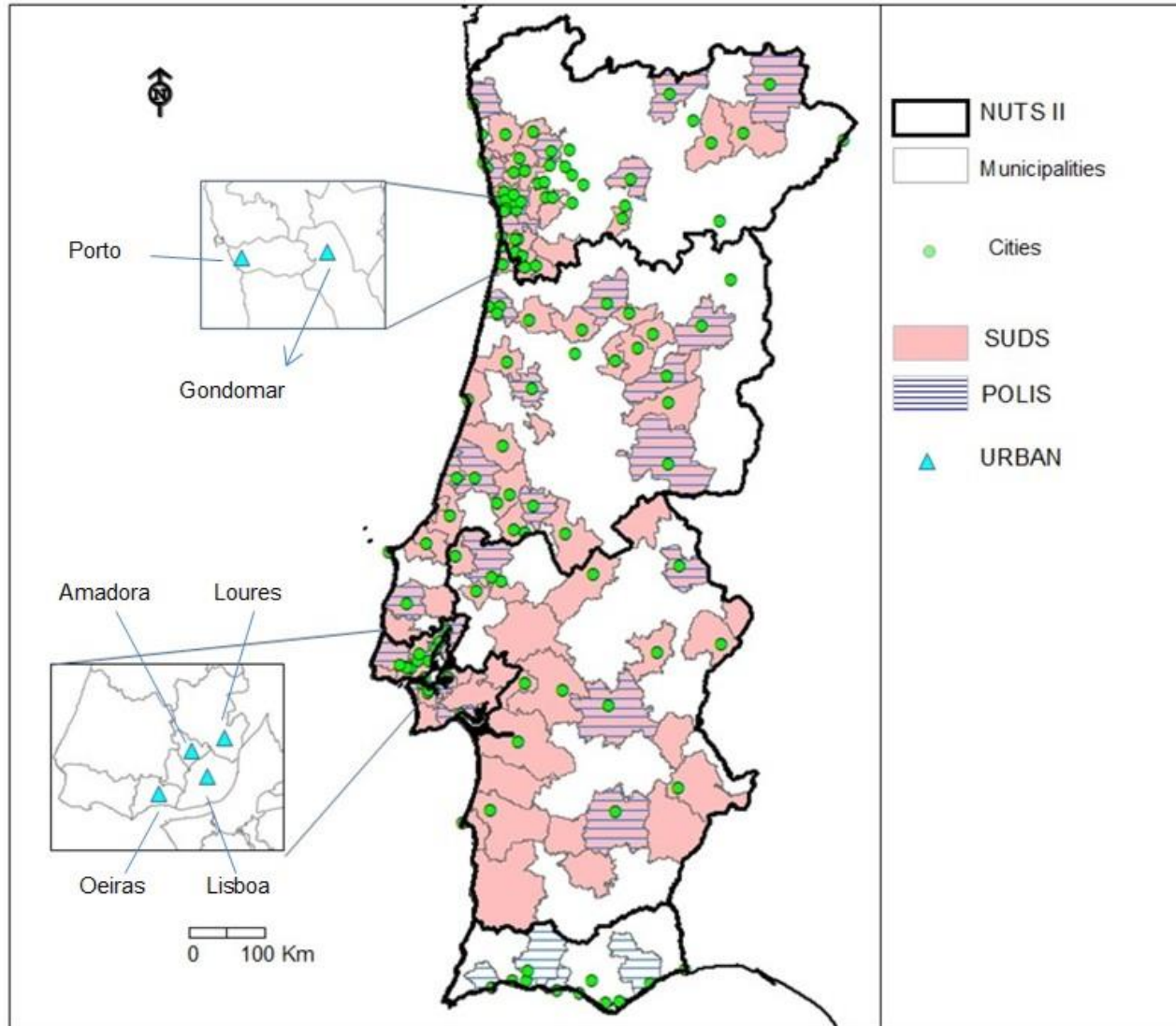
Analytic Dimensions for Assessing ITI



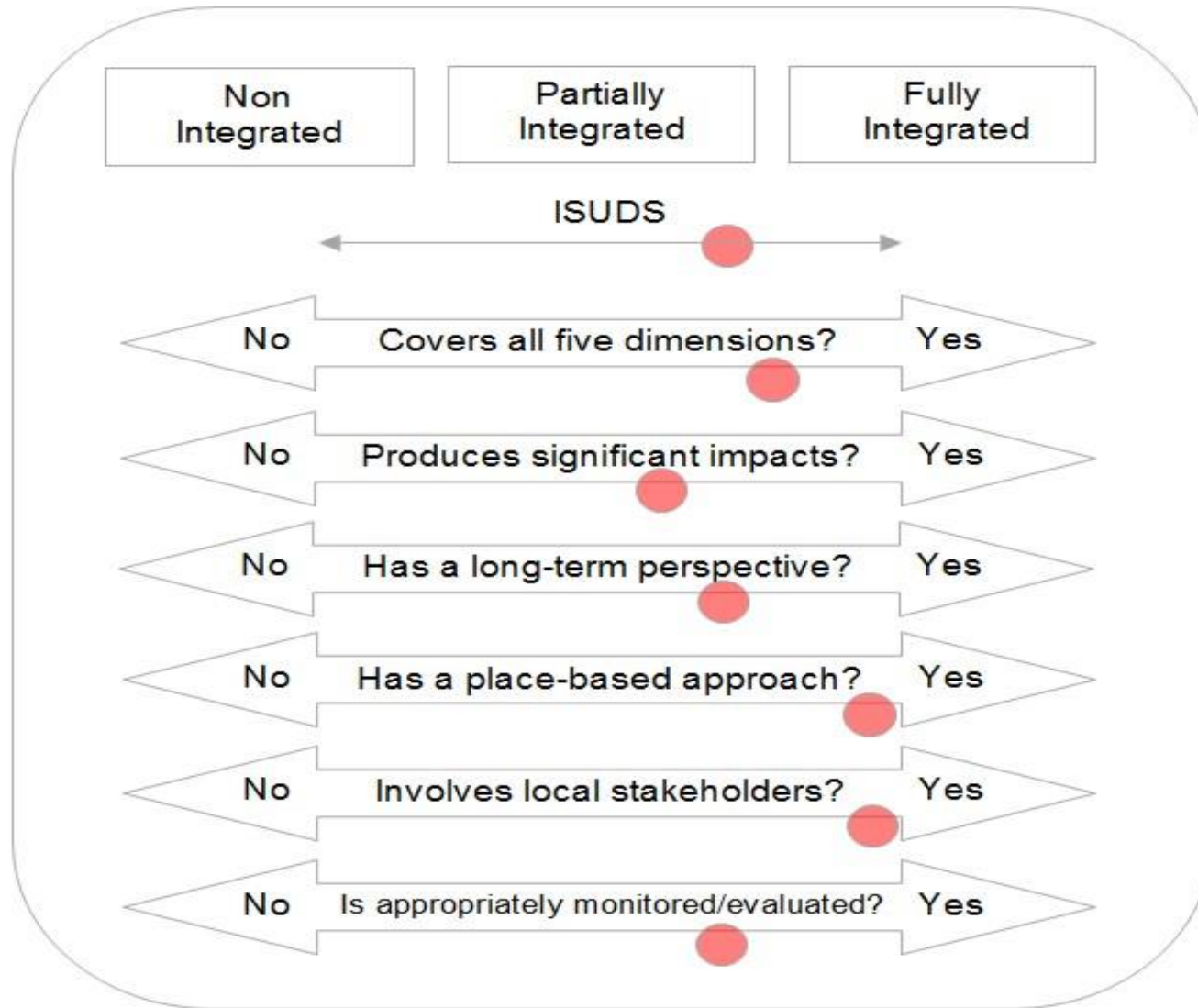
4

Case-Study

Urban Integrated Development Strategies in PT



Urban Integrated Development Strategies in PT





Co-financed by the European Regional Development Fund

Inspire Policy Making with Territorial Evidence

espon.eu   

Thank you

Eduardo Medeiros, Instituto Universitário de Lisboa

This presentation will be made available at: www.espon.eu/espon-scientific-conference-2018