

## // ESPON Seminar – Practical Information

# The role of functional areas for territorial cohesion

## // Locations

### Event venue:

Congress Hall Palas  
Strada Palas nr. 7A, clădirea A1  
700051 Iași  
Romania  
Tel: +40 232 208 825  
Web: [www.congresshall.ro](http://www.congresshall.ro)

### Dinner Location:

Hotel Ramada  
Strada Grigore Ureche nr. 27,  
Iași 70044, Romania

## // Pre-booking of hotels

### Hotel Ramada:

**Price:** 240 lei (approx. 50 euro/night)  
**Deadline:** None communicated  
**Booking code:** ESP19  
**Email:** [reservation@ramadaiasi.ro](mailto:reservation@ramadaiasi.ro)  
**Website:** <https://www.ramadaiasi.ro/en/homepage-en/>

### Hotel Unirea

**Price:** 275 lei (approx. 57 euro/night) for single occupancy, 310 lei for two persons in the double room (prices include access to swimming pool, Jacuzzi, cardio area and gym)  
**Deadline:** 16th of May (with possibility of extension)  
**Booking code:** ESPON2020  
**Email:** [rezervari@hotelunirea.ro](mailto:rezervari@hotelunirea.ro)  
**Website:** <https://www.hotelunirea.ro/en>

### Hotel International:

**Price:** Double deluxe room approx. 95 euro/night single use, 110 euro/night double use (depending on exchange rate). The rates includes VAT, 0,75% local tax, full breakfast buffet, free access to the spa center, WI-FI internet and parking  
**Deadline:** None communicated  
**Booking code:** ESPON  
**Website:** <https://www.hotelinternationaliasi.ro/>  
**Reservation procedure:** 1. On the website go to 'make a reservation', put in the dates and 'check rates'. 2. Between the brown menu bar and the room pictures, you can 'add code'. Choose 'Rate Access/Corporate Code' and fill in the booking code 'ESPON'. 3. You will now get the reduced room prices. Proceed with the reservation as you would do normally.

*The reservation of rooms with reduced rates is possible based on availability. Rooms are allocated on a 'first come first serve' basis. All participants are responsible for their own accommodation arrangements.*

## // How to get there

### **Airport:**

The airport is located about 8 km from the city centre and can be reached either by bus or taxi.

Website: <https://www.aeroport-iasi.ro/>

### **Airport bus:**

The Iași Public Transport Company (CTP Iași) run a bus service (bus 50) that connects the International Airport to the center of the city in approximately 10 minutes. The timetable of the bus can be found at the following address:

[http://www.sctpiasi.ro/uploads/editor-files/pdf/Orar\\_traseul\\_50\\_04\\_02\\_2019.pdf](http://www.sctpiasi.ro/uploads/editor-files/pdf/Orar_traseul_50_04_02_2019.pdf).

In order to reach the venue you should get off at the first station (Târgu Cucu) and you may either go by foot (15 min. walk) or you may take the tram 9 to Tehnopolis and get off at the first station (Palatul Culturii).

Tickets (single): RON 2.50 (around 0,55 EUR) can be used for 2 hours within zone 1 (which includes the airport and the city centre).

Transport time from the airport to the venue is estimated to 40-50 minutes.

### **Taxi:**

The distance from the airport to the venue is about 7-9 km (depending on the itinerary), and the trip should typically last less than 30 minutes. Taxi fares are between 2 – 2.5 RON / km (0,4-0,55 EUR/km), and after 10pm the fares are higher. Recommended taxi companies are EuroTaxi, LuxTaxi, Parma, Delta.

*Please note that if you are eligible for the reimbursement of your travel costs by the ESPON programme, taxi fares are **not** considered eligible expenses.*

## // General Information

### **Free of charge**

The event, side visit, dinner, lunches and coffee breaks are all free of charge.

### **WIFI**

Free and available at the venue. Wifi code will be displayed on the opening slide of the event.

### **Currency**

The Romanian official currency is Romanian Leu (RON); 1 Euro is about 4,8 Lei; 1 US Dollar is about 4,2 Lei.

### **Local emergency number**

There is a unique emergency number: 112

**Plug socket**

Type F, with voltage of 220V and frequency of 50Hz.

**Time zone**

In June, the official time is the Eastern European Summer Time - GMT +3.

**Country dialling code**

The country dialling code is 0040 or +40.

**Romanian EU Council Presidency Website**

The Romanian EU Council Presidency website ([www.romania2019.eu](http://www.romania2019.eu)) contains information on all topics related to the Romanian EU Council Presidency.

**General information on Iași**

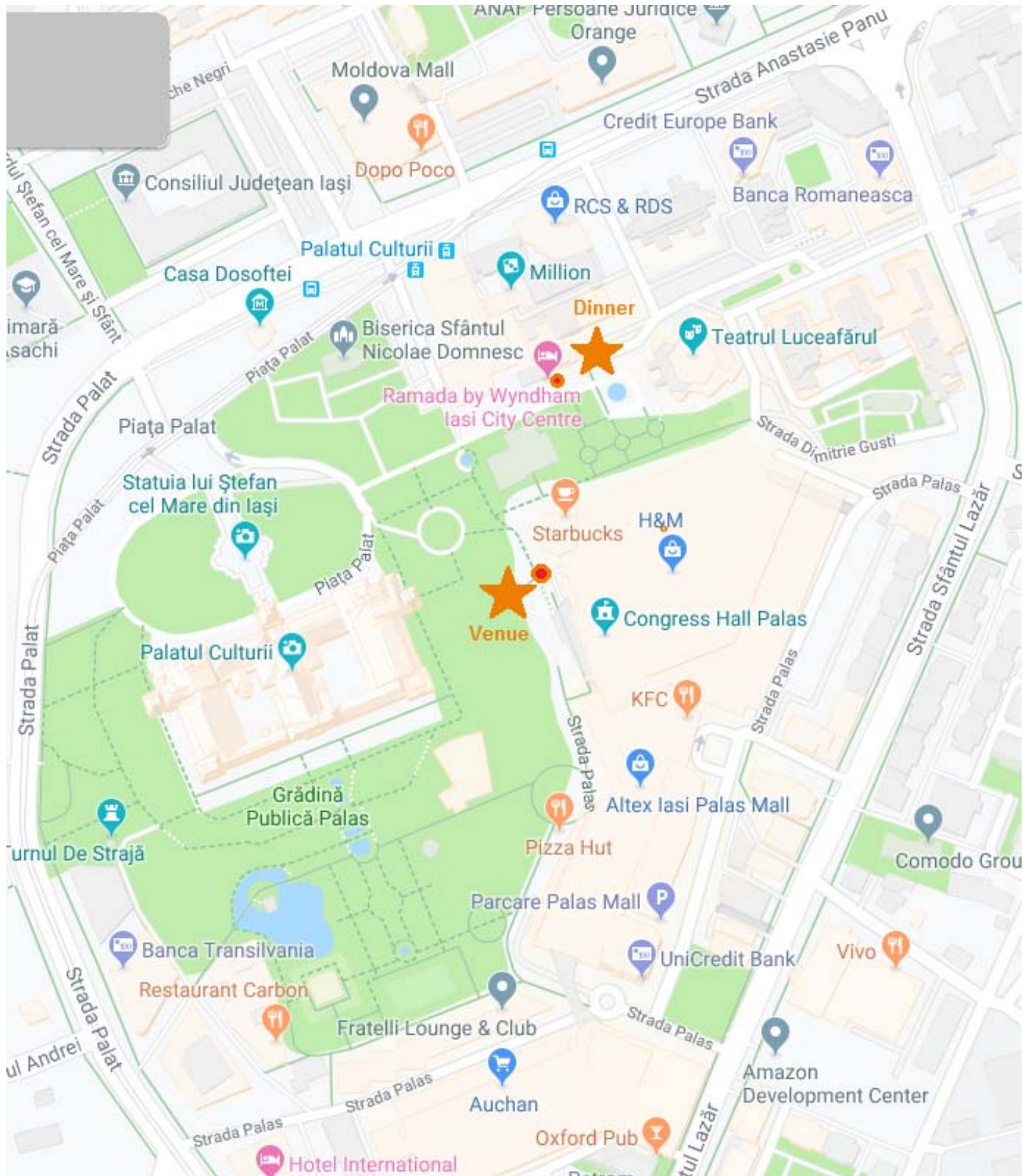
Information on Iași and its cultural and recreational offers is available at <https://www.iasi.travel/en>.

**Foreign Representations in Romania**

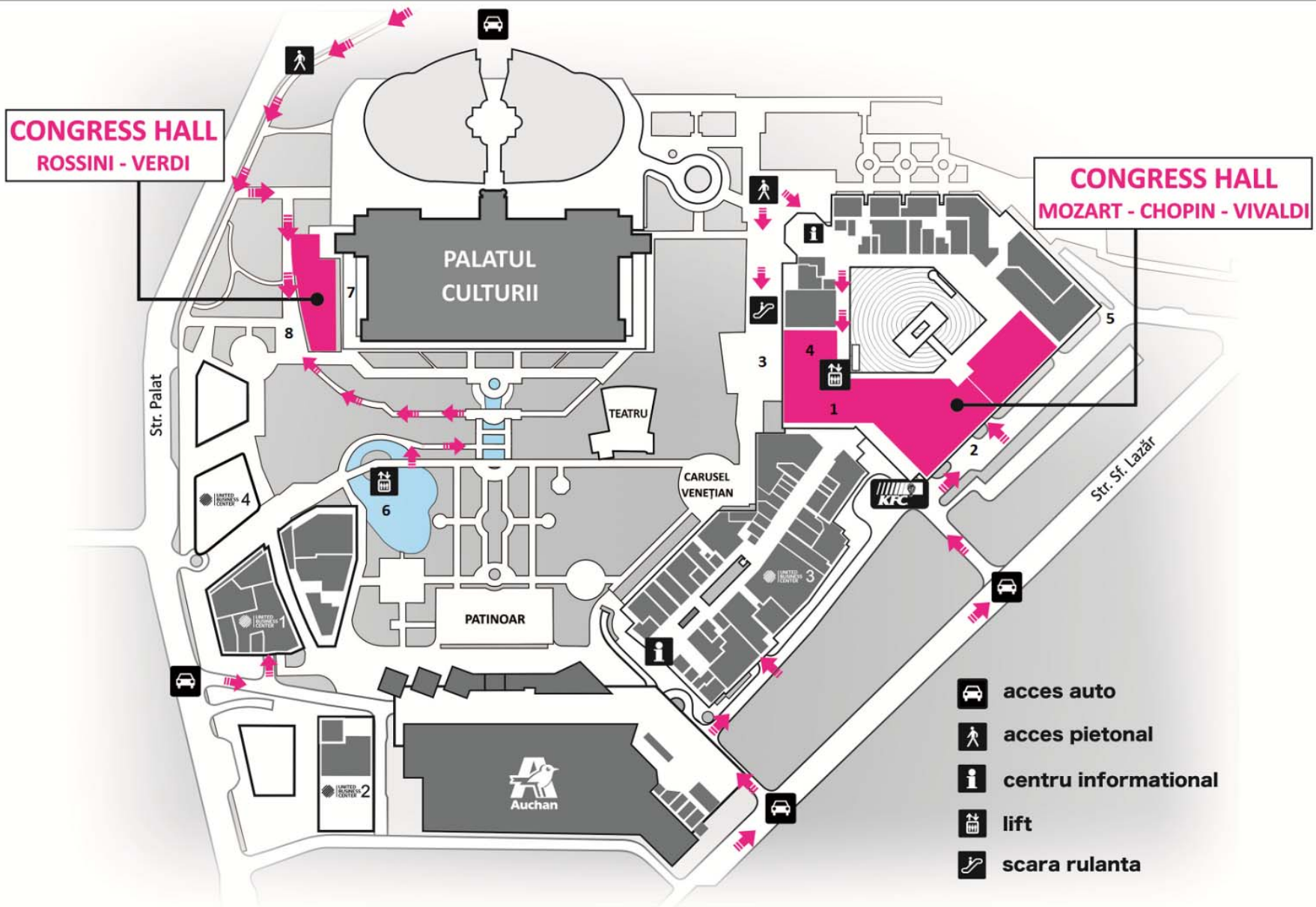
See <http://mae.gov.ro/en/foreign-missions>. Most foreign missions are based in Bucharest.

**Smoking**

In Romania, smoking is prohibited in indoor public areas.



# HARTĂ LOCALIZARE CONGRESS HALL

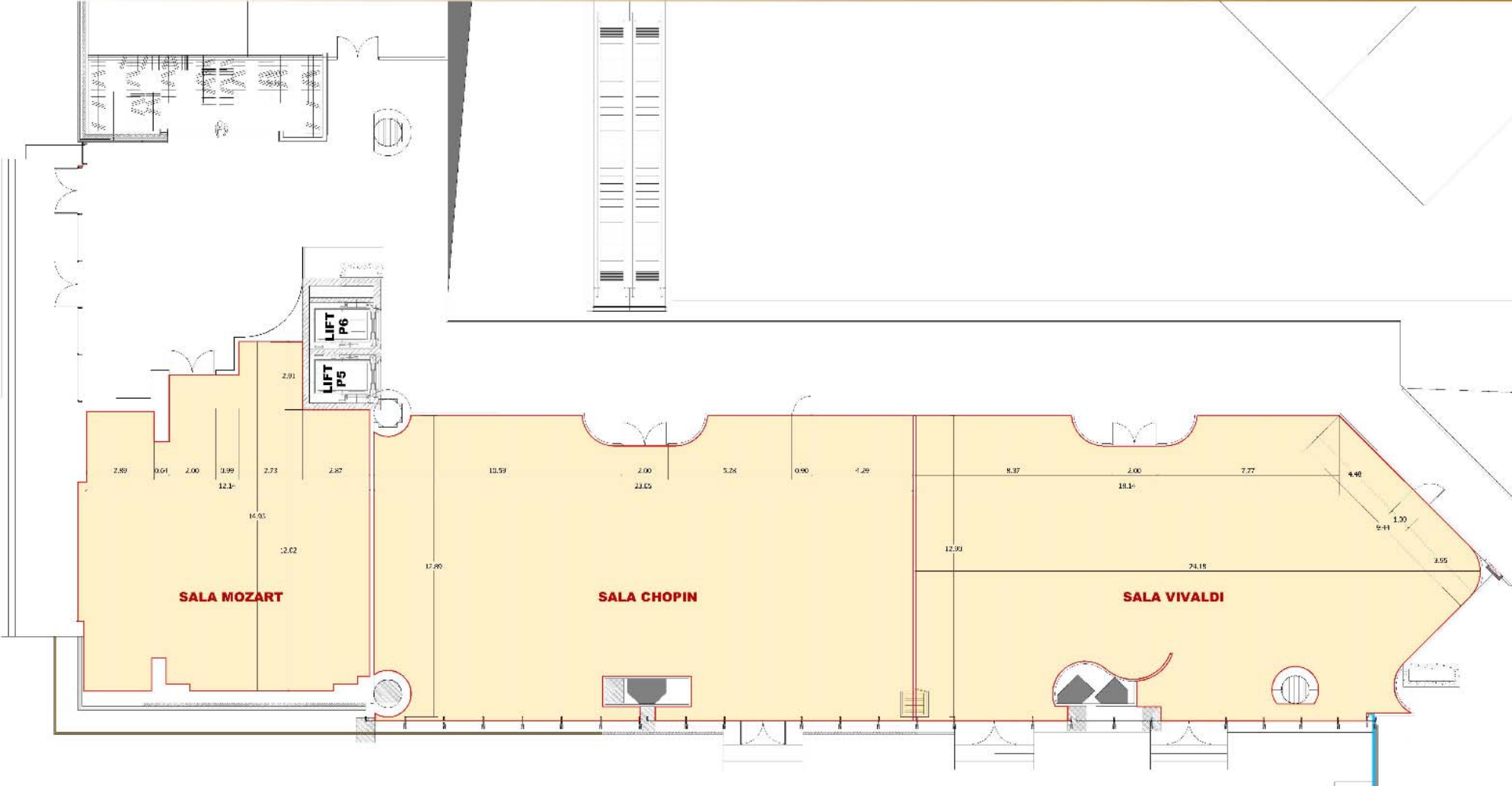


# Congress Hall

Palas Mall, etaj 2



# SALILE MOZART-CHOPIN-VIVALDI



**STAȚIA AEROPORT (SPRE GARĂ)**

LUNI	MARȚI	MIERCURI	JOI	VINERI	SÂMBĂȚĂ	DUMINICĂ
8:25	9:05	9:05	8:25	9:05	9:45	9:10
9:05	9:55	9:55	9:05	9:55	11:45	12:20
9:55	11:45	13:55	9:55	11:50	13:50	13:55
13:00	13:20	16:20	12:55	12:40	17:30	14:10
14:05	13:50	17:30	14:00	14:10	18:55	14:40
15:50	14:30	19:05	14:45	16:20	19:40	16:20
18:00	18:55	19:50	19:25	18:15	21:05	17:55
19:00	19:40	21:10	21:10	19:00	23:15	19:05
20:05	21:10	23:15	23:05	19:50		19:50
21:10	23:15			21:10		21:15
23:05				23:15		23:15

**STAȚIA GARA (SPRE AEROPORT)**

LUNI	MARȚI	MIERCURI	JOI	VINERI	SÂMBĂȚĂ	DUMINICĂ
4:45	4:45	4:45	4:45	4:45	4:45	4:45
5:45	5:45	5:45	5:45	5:45	5:45	6:15
7:00	7:50	7:50	7:10	7:50	8:15	8:10
7:50	10:26	10:20	7:50	10:26	11:10	10:15
10:46	11:10	11:36	11:10	11:21	15:25	11:55
11:51	12:51	12:36	12:26	13:06	16:10	12:45
12:36	16:06	13:31	17:36	14:36	17:25	13:30
13:31	17:21	15:21	20:12	15:56		15:20
16:16	20:12	17:36		17:36		16:30
17:36		20:12		20:12		17:30
20:12						20:15

**STAȚIA PIAȚA UNIRII (SPRE AEROPORT)**

LUNI	MARȚI	MIERCURI	JOI	VINERI	SÂMBĂȚĂ	DUMINICĂ
4:47	4:47	4:47	4:47	4:47	4:47	4:47
5:47	5:47	5:47	5:47	5:47	5:47	6:17
7:02	7:52	7:52	7:12	7:52	8:17	8:12
7:52	10:30	10:24	7:52	10:30	11:14	10:19
10:50	11:14	11:40	11:14	11:25	15:29	11:59
11:55	12:55	12:40	12:30	13:10	16:14	12:49
12:40	16:10	13:35	17:40	14:40	17:29	13:34
13:35	17:25	15:25	20:16	16:00		15:24
16:20	20:16	17:40		17:40		16:34
17:40		20:16		20:16		17:34
20:16						20:19

**STAȚIA TÂRGU CUCU (SPRE AEROPORT)**

LUNI	MARȚI	MIERCURI	JOI	VINERI	SÂMBĂȚĂ	DUMINICĂ
4:49	4:49	4:49	4:49	4:49	4:49	4:49
5:49	5:49	5:49	5:49	5:49	5:49	6:19
7:04	7:54	7:54	7:14	7:54	8:19	8:14
7:54	10:34	10:28	7:54	10:34	11:18	10:23
10:54	11:18	11:44	11:18	11:29	15:33	12:03
11:59	12:59	12:44	12:34	13:14	16:18	12:53
12:44	16:14	13:39	17:44	14:44	17:33	13:38
13:39	17:29	15:29	20:20	16:04		15:28
16:24	20:20	17:44		17:44		16:38
17:44		20:20		20:20		17:38
20:20						20:23