



Co-financed by the European Regional Development Fund

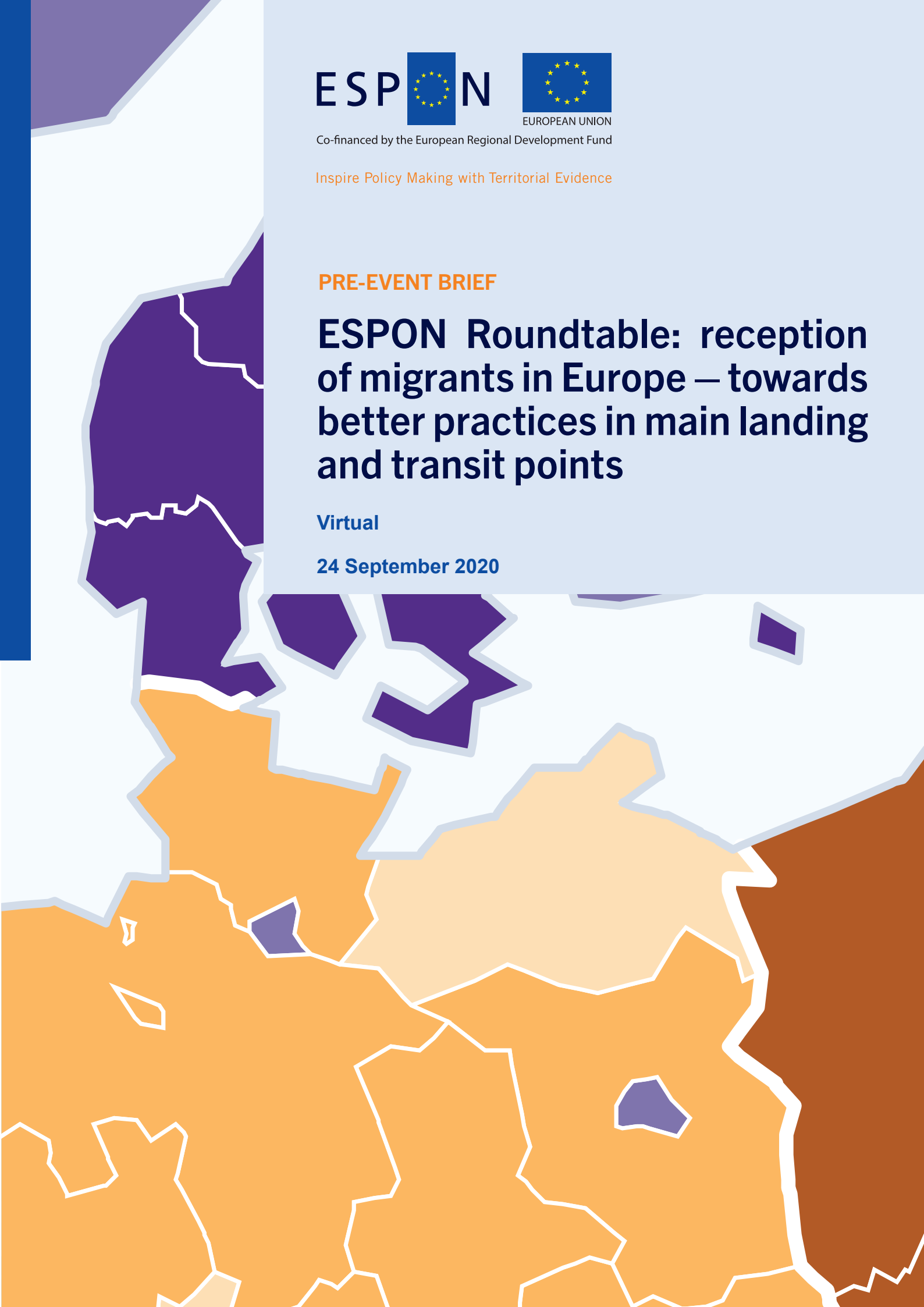
Inspire Policy Making with Territorial Evidence

PRE-EVENT BRIEF

ESPON Roundtable: reception of migrants in Europe – towards better practices in main landing and transit points

Virtual

24 September 2020



Introduction



Organised as part of the ESPON programme and impelled by the Maltese Planning Authority, this roundtable will deal with the reception of migrants in the Mediterranean and Adriatic regions, in line with the ESPON MIGRATUP targeted analysis results. The 2020 ESPON programme includes two main reports on the topic of migration:

- MIGRATUP 'Territorial and Urban Potentials Connected to Migration and Refugee Flows' aimed at providing a comprehensive overview of the recent migration and refugees flows in the Adriatic-Ionian and Danube macro-regions, as well as an investigation of the territorial impacts of migration, seeking to explain how it affects the current socioeconomic challenges and provide opportunities as well.
- MIGRARE 'Impacts of Refugee Flows to Territorial Development in Europe' aimed at producing territorial evidence on the flows of asylum seekers and refugees, their distribution between and within EU countries, regions and cities, impact on socio-economic development as well as information on crisis management and integration.

During this roundtable, exchanges will be dedicated to the first-line regions in migration flows and will focus on their common challenges regarding the high inflows of migrants they have to face. Therefore, both the content and the stakeholders of the MIGRATUP targeted analysis will be at the core of this roundtable, since this report has been tailor-made for regional stakeholders from the Adriatic-Ionian and the Danube macro-regions.

Targeted analysis, what is it?

Since 2007, this ESPON offer has been supporting territorial development processes at local, regional and national levels in Europe by bringing together policy makers who share the same kinds of challenges and who are looking for new territorial evidence and a European perspective. Applying sound methodologies and providing scientific expertise, ESPON Targeted Analyses deliver demand-driven and tailor-made analytical studies in support of territorial decision-making.

Objective

The main objective of this event is to share regional experiences among participants so they get some clues and food for thought to work on migration management. The Maltese Planning Authority as well as regional practitioners and policymakers from neighbouring countries (Italy, Greece, France, Cyprus, and Spain) are the main targeted audience. During this online event, stakeholders and researchers from MIGRATUP will share their experience and knowledge with the audience. These presentations will be supplemented by an opening from officials of the Maltese government and 'non-MIGRATUP' speakers to broaden the discussions.

Nation states have agreed on mechanisms for an equitable redistribution of refugees and if some cities have implemented programmes for receiving and promoting the insertion of migrants nevertheless, there is still a need on better governance and coordination. Analyses that are both context-specific and connected to global dynamics are crucial to determine the effects of migration on the European territories. Indeed, geography, spatial strategies and types of cities shape profoundly the distribution of arrivals, the route of transits, the hubs of destination, originating a local overburden of the policies related to the reception and integration. In that sense, one-size-fits-all policies cannot be the answer to support territories in the management of migrants flow.

Consequently a better understanding of the local variations and issues of both policy responses and policy outcomes is crucial as well as a better overview of success stories in terms of reception. These success stories will be at the heart of the workshop as they illustrate concretely the potential of local policies. The presentations will explore how different territories can overcome challenges of unpredictable and large-scale inflows and how they can enhance the potentials in their endeavours to cope with the current migration inflows within their strategic policy and development objectives. In this, the concept of 'migration crisis' will have to be discussed as well as the definition of 'migrant'.

Therefore, while presenting best practices, local variations and multi-level governance the following questions will be at the core of the presentations:

- 1. What is the reason for variations in policy response and outcome in different reception regions?**
- 2. What can be done in the landing, transit, arrival points to face the challenges of unpredictable and large-scale inflows?**
- 3. What learning processes and circulation of best practices is possible? (taking into account territorial specificities)**

Structure and Input

The roundtable will be divided in three main parts.

The first part will start off with a welcoming from the Professor Renaud Le Goix (*French ESPON Contact Point*) and a short presentation of the ESPON programme by an ESPON representative. Then the Professor Saviour Formosa (*Maltese ESPON Contact Point*) and Mr Joseph St. John from the Maltese Ministry for Home Affairs, National Security and Law Enforcement will open the floor by presenting the local context and interplay between the various actors, plans and territorial scales in dealing with arrivals, reception, relocation and flows of migrants.

A second part will be dedicated to the MIGRATUP project and its stakeholders' experiences. The Professor Stefano Bianchini (*University of Bologna*) and the Professor Marco Zoppi (*University of Bologna*) will present the project and its results. This presentation will be followed by the testimony and point of view of 2 MIGRATUP stakeholders: an Italian region and a European programme. Lodovico Gherardi (Emilia Romagna Region) will develop and expose the current state of its territory regarding migrants flow and reception, pointing out best practices and challenges to overcome, as well as the inputs from the MIGRATUP project. Ivano Maggazu (INTERACT) will develop the role of INTERACT in diffusing the results among the various INTERREG managing authorities interested in the topic of migration and the feedbacks from their part. A specific attention will be given to the interplay between the different territorial scales of governance and strategies and to the local variations in terms of policy responses and outcomes.

The last part will be dedicated to proposals and comments from non-ESPON speakers who will react on previous presentations. Ricard Zapata-Barrero, Full Professor at the Pompeu-Fabra University first, followed by Amina Damerdji, an NGO volunteer who will bring a view from the field. The audience will also have the opportunity to raise make proposals.

Finally, the Professor. Renaud Le Goix will conclude the exchanges of the afternoon.

Agenda

- 13:15 - 13:30** **Welcome**
- Renaud Le Goix - French ESPON Contact Point*
-
- 13:30 - 14:30** **Migration flows in Malta – An ESPON perspective**
- 10 min – ESPON Programme Opening
- ESPON representative*
- 30 min – Malta : a main European Landing Point facing challenges
- Professor Saviour Formosa, Maltese ESPON Contact Point*
- Mr. Joseph St. John, Ministry for Home Affairs, National Security and Law Enforcement*
- Q&A from the audience**
-
- Break - 10 min**
-
- 14:40 - 16:00** **MIGRATUP project : best practices and challenges for future**
- 15 min - ESPON MIGRATUP report (Territorial and Urban Potentials Connected to Migration and Refugee Flows) – data and conclusions by *Stefano Bianchini and Marco Zoppi (University of Bologna)*
 - 15 min - Emilia-Romagna Region – Learnings and regional evolutions since MIGRATUP by *Lodovico Gherardi (Emilia Romagna Region)*
 - 15 min - INTERACT - What lessons for INTERREG managing authorities? A capitalisation network perspective
 - **Q&A from the audience**
-
- Break - 10 min**
-
- 16:10 - 17:00** **Beyond MIGRATUP: non-ESPON views and recommendations for future**
- 15 min - An expert reaction, Professor Ricard Zapata Barrero (Pompeu Fabra University)
 - 15 min - From the field: An NGO's point of view on the current situation by *Amina Damerджи (SOS Méditerranée)*
 - **Q&A from the audience - inputs for further research / policy recommendations**
-
- 17:00** **Conclusions**
- 15 min - Feedback and conclusions by *Renaud Le Goix (University of Paris)*

Goal and Expected Outcomes

The roundtable will aim at providing inputs to local and regional decision makers and practitioners in order to equip them for the reception of migrants in their respective regions and for the development of their planning objectives. In that purpose the reasons for variations in policy responses and outcomes in different reception regions will be developed.

Inputs from the both speakers and the audience, outlining possible solutions and next steps related to migration challenges will be formulated. Proposals and development paths for achieving a better coordination among territories and among the various actors of migration will also be developed, as well as share learning perspectives.

Making available relevant research and data is crucial both for stakeholders and European funding programmes. Therefore, the roundtable will also result in recommendations and formulation of needs for further ESPON research or future workshops on the topic, pointing out missing data.

Finally, a short paper summarizing the main outcomes resulting from the event will be delivered a few days later.



Co-financed by the European Regional Development Fund

Inspire Policy Making with Territorial Evidence

espon.eu



ESPON 2020

ESPON EGTC

4 rue Erasme, L-1468 Luxembourg

Grand Duchy of Luxembourg

Phone: +352 20 600 280

Email: info@espon.eu

www.espon.eu

The ESPON EGTC is the Single Beneficiary of the ESPON 2020 Cooperation Programme. The Single Operation within the programme is implemented by the ESPON EGTC and co-financed by the European Regional Development Fund, the EU Member States and the Partner States, Iceland, Liechtenstein, Norway and Switzerland.

Disclaimer

This delivery does not necessarily reflect the opinion of the members of the ESPON 2020 Monitoring Committee.