

# Project ESPON

## RURALPLAN - Innovative planning in shrinking societies

*Innovative Planung in schrumpfenden  
Gesellschaften*



Dr. Delphine Rime 07.03.2024

[Website: RURALPLAN - Innovative  
planning in shrinking societies | ESPON](#)



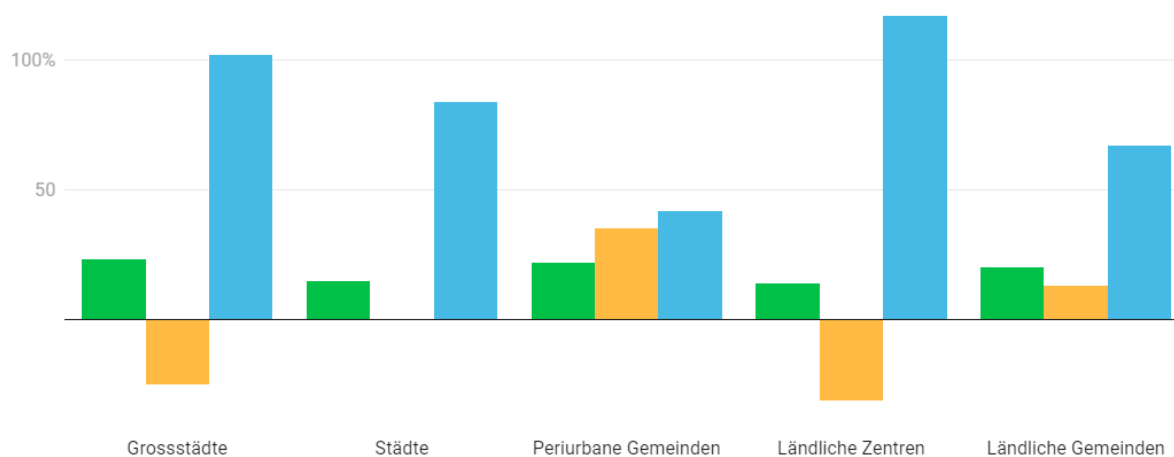
# Schrumpfung in ländlichen Räumen

regiosuisse Raumtyp	Arbeitsplätze absolut (VZÄ, 2020)	Arbeitsplatzanteil (VZÄ, 2020)	Einwohner absolut (2021)	Einwohneranteil (2021)
Grossstädtische Gemeinden	1'651'128	41%	2'665'707	31%
Städtische Gemeinden	1'446'728	36%	2'832'755	33%
Periurbane Gemeinden	453'151	11%	1'475'422	17%
Ländliche Zentrumsgemeinden	165'090	4%	375'439	4%
Ländliche Gemeinden	403'105	10%	1'389'468	16%

Tabelle: regiosuisse • Quelle: [BFS / STATPOP und STATENT](#) • [Daten herunterladen](#) • Erstellt mit [Datawrapper](#)

## Anteil der drei Treiber am Bevölkerungswachstum zwischen 2000 - 2021 in %

■ Natürliche Bevölkerungsveränderung ■ Nettozuzüge ■ Nettozuwanderung





# 3 Fallstudien



Region Innlandet in Norway



Dalarna County in Sweden



Region Albula in Kanton Graubünden (Schweiz)



Tiefencastel in der Region Albula



Surava in der Region Albula



Neue Regionalpolitik **nrp**  
Nouvelle politique régionale **npr**  
Nuova politica regionale **npr**  
Nova politica regionala **npr**



Schweizerische Arbeitsgemeinschaft für die Berggebiete  
Groupement suisse pour les régions de montagne  
Gruppo svizzero per le regioni di montagna  
Gruppa svizra per las regiuns da muntogna



**Innlandet**  
County Council



**Länsstyrelsen**  
**Dalarnas län**

**li.u** LINKÖPINGS  
UNIVERSITET



**EUROMONTANA**



Schweizerische Eidgenossenschaft  
Confédération suisse  
Confederazione Svizzera  
Confederaziun svizra

Swiss Confederation

Federal Department of Economic Affairs,  
Education and Research EAER  
State Secretariat for Economic Affairs SECO



**Inland Norway**  
**University of**  
**Applied Sciences**



# Problematic

Literature discussing shrinking in Europe in general finds that the most common response in planning is to keep a strategy for economic growth with a goal of resuming population growth (Sousa and Pinho 2015)

## Hypothesis

Our position is that the tight coupling between growth (in population) and development needs to be de-coupled, meaning that it is possible to plan and create (sustainable) societal development in shrinking regions without population growth.

***→ The Targeted Analysis RURALPLAN, aims at producing evidence on how strategic planning regarding rural areas responds to shrinking, leading to a model for knowledge-based strategic planning and policymaking.***



# Drei Entwicklungspfade

Lebendige  
Peripherien  
in der  
Schweiz:



**1. Dort wachsen, wo die  
Transformation  
einen Mehrgewinn bringt**



Transformation  
gemeinsam  
gestalten

Universität für Weiterbildung  
Erziehungswissenschaften  
Erziehungswissenschaftliche Fakultät  
Erziehungswissenschaften  
Erziehungswissenschaften

**2. Dort erhalten und bewahren, wo  
Freiraume geschützt werden müssen**



**3. Dort intelligent schrumpfen, wo der  
Zusammenhalt gefährdet ist**

[Bericht Lebendige  
Peripherien ROR](#)



# Two main concepts

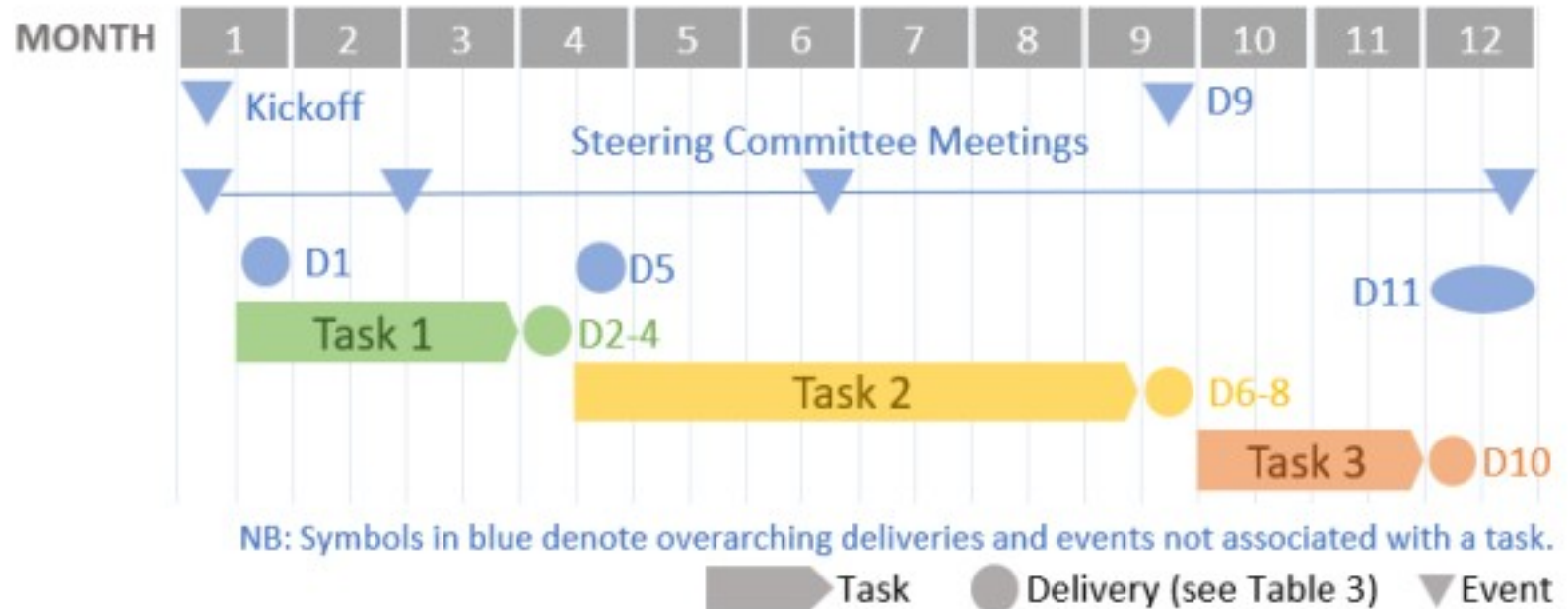
## Innovative planning

as a strategic, territorial, and holistic planning for societal development

## RUPIL

Democratic and inclusive arena to facilitate strategic and innovative planning practice, a Rural Planning and Innovation Lab

- (1) engaging societal actors in planning to mobilize more resources for development,
- (2) having a knowledge-based and realistic approach,
- (3) developing new roles for politicians,
- (4) developing processes to legitimize other social objectives, and
- (5) developing innovative processes for searching for alternative goals, strategies, and solutions.



**TASK 1: Methodological framework and literature review on strategic local planning in shrinking rural areas**

**TASK 2: A model for innovative planning and policy making (RUPIL – 6 phases)**

**Task 3: A policy brief on innovative planning model for rural shrinking territories**



# Merci für Ihre Aufmerksamkeit!



# Stakeholders, ESPON Team, Service Providers

## Lead Stakeholder

- **Innlandet County Authority NO** Erik Hagen, Kristin Ryen Reithaug, Nils Haavar D.Hoegset, Torunn H. Kornstad, Tron Ole Bamrud, Wibeke Børresen Gropen

## Stakeholders

- **Sate Secretariat for Economic Affairs SECO CH** Delphine Rime, Sabine Kollbrunner
- **County administrative board of Dalarna SE** Jakob Ebner, Mikael Selander
- **Euromontana** Guillaume Corradino

## Service providers

- **Inland Norway University of Applied Sciences (INN)** Aleksander Bern, Kjell Overvag, Line Mari Tholstrup, Ørjan Land Hansen, Ulla Higdem, Windy Kester Moe
- **Linköping university** Josefina Syssner
- **Swiss Center for Mountain regions (SAB)** Peter Niederer, Vera Ambühl

**ESPON EGTC** Angela Emidio, Marta Roca, Martin Gauk, Nicolas Rossignol, Nikos Lampropoulos, Piera Petruzzi