

1

CIRCTER – Circular Economy and Territorial consequences



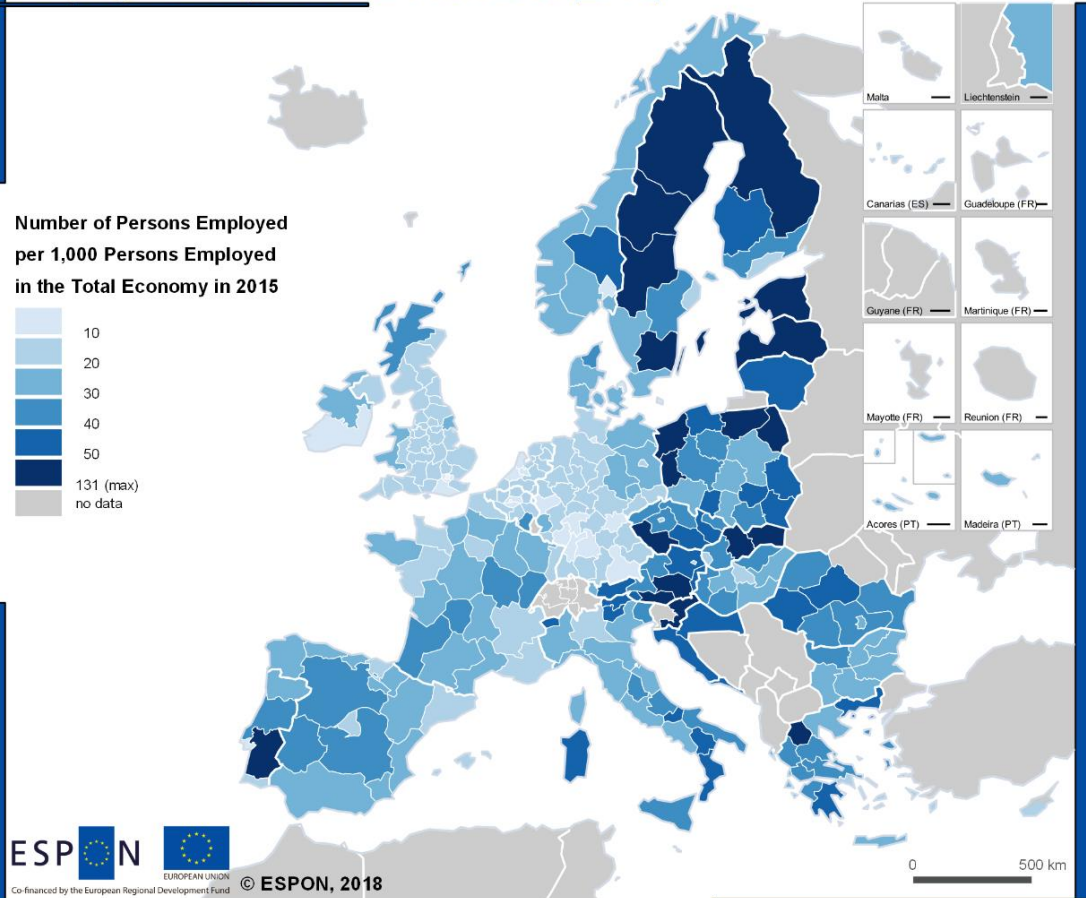
Circular Economy (CE)

1. What is the current state and potential of European regions with regards to CE?
2. How to make best use of a region's endogenous resources and involve the local population and local influencers in the transition towards a CE?



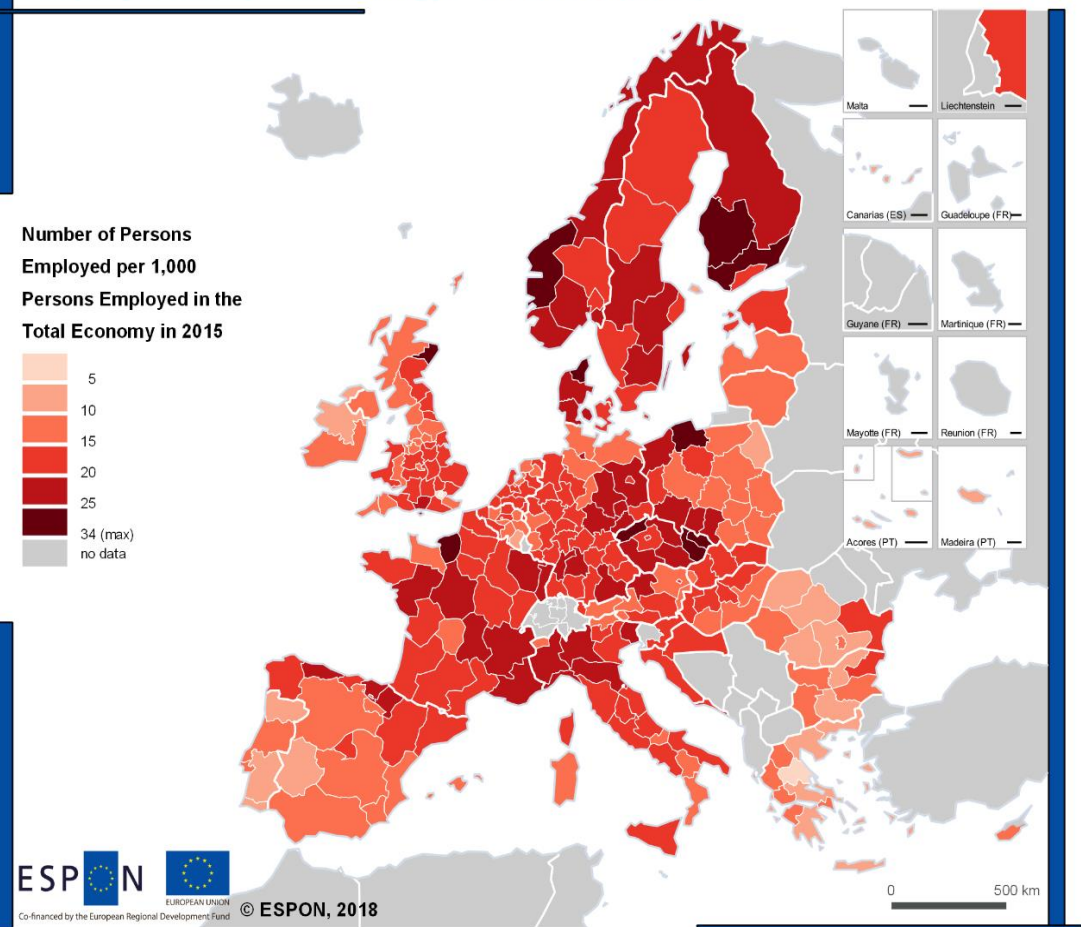
State and potential of European regions with regards to a circular economy

Employment by Material Providers (2015)



Regional level: NUTS 2 (version 2013)
Source: ESPON CIRCTER, 2018
Origin of data: Eurostat, accessed 2018, calculated by Prognos AG
CC-UMS RIATE for administrative boundaries

Employment by Technology Providers (2015)



Regional level: NUTS 2 (version 2013)
Source: ESPON CIRCTER, 2018
Origin of data: Eurostat, accessed 2018, calculated by Prognos AG
CC-UMS RIATE for administrative boundaries

How to support regions in the transition towards a circular economy?

CIRCTER guidance:

1. Assess the local context and potential for circular economy
2. Set the right policy priorities
3. Setting out the right governance and implementation processes:
 - Identify the key partners and stakeholders to work with
 - Mobilise stakeholders to create regional alliances to promote circular economies
 - Organize collaborative action and effective implementation
 - Communicate plans
 - Set up a monitoring and evaluation system for the circular economy
4. Ensuring favourable framework conditions via policy mix:
 - Building policy measures mix
 - Examples of policy measures to support the circular economy

