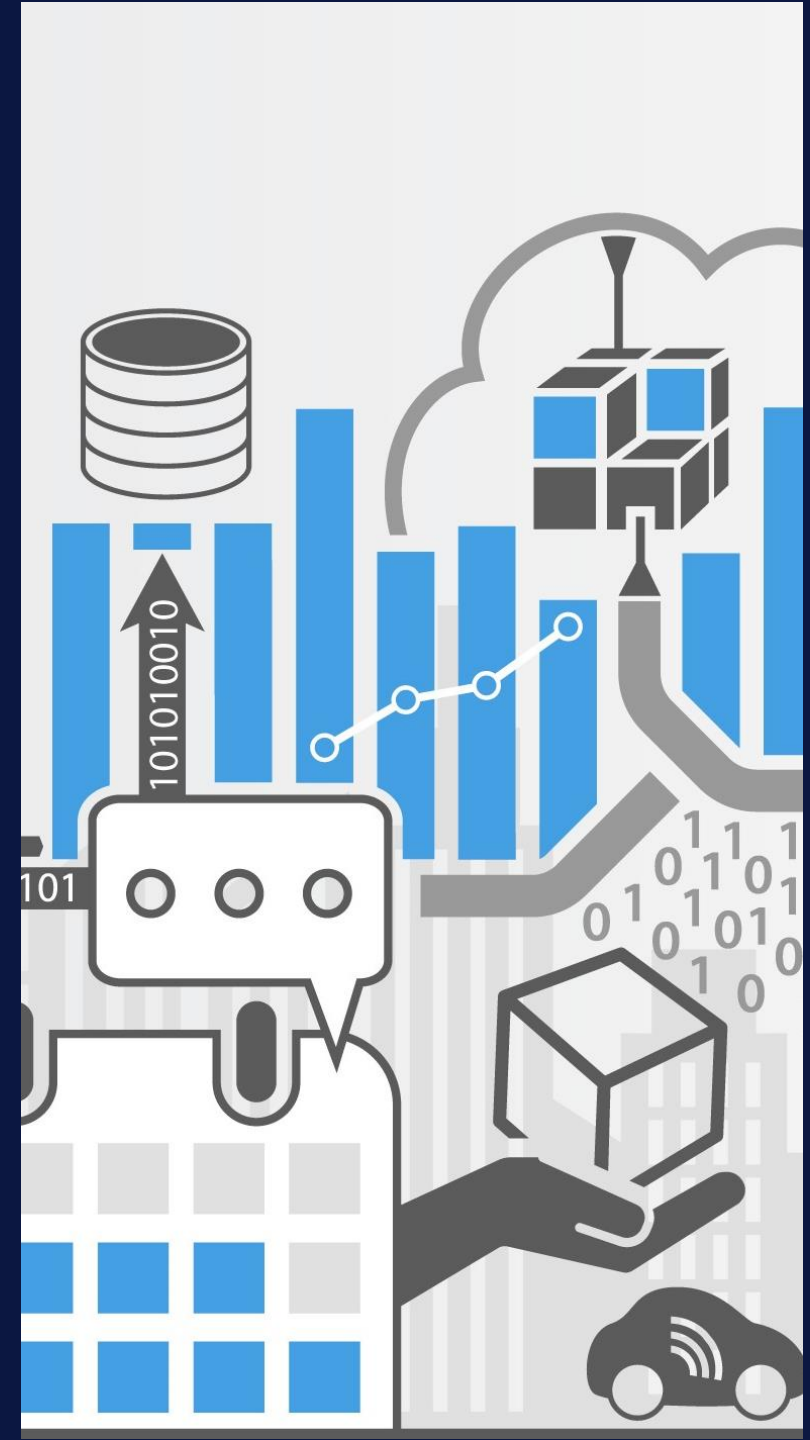


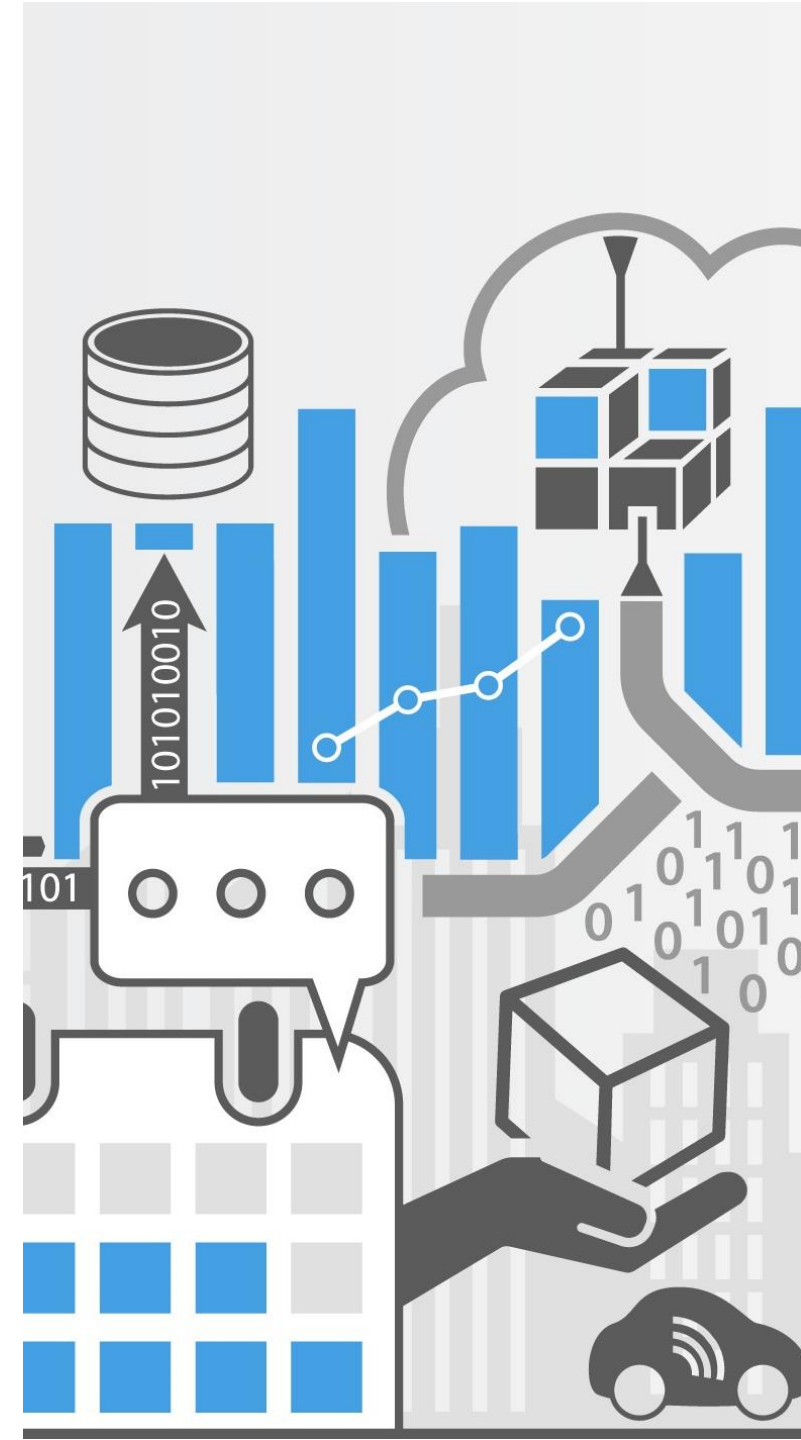
5

ESPON Database Portal



Database Portal

1. How to make the ESPON Database Portal as user-friendly as possible?
2. How to keep the data in the ESPON Database Portal up-to-date?



DB Portal – make it user-friendly

- Indicator structure for an easier navigation

- Single indicators (149), e.g. "Proportion of Protected Areas"
- Multi-indicators (42) - containing 595 sub-indicators (classes), e.g. "Gender gap by age group" = 3 indicators

- User Interface <http://projects.mcrit.com/esponDB/>

- Quick access to data via the **MAIN DATA** section
- Download as CSV or Shapefile for direct use in spreadsheet or GIS software
- Bulk download via the **PROJECT ARCHIVES** section

- Web services

- ESPON API: query and retrieve data in standard text format (JSON)
<https://edp.unepgrid.ch/api/>
- OGC API: query and retrieve data in geospatial standards, e.g. WMS
https://esponest.unepgrid.ch/geoserver/espon_layers/wms?service=WMS&version=1.1.0&request=GetMap&layers=espon_layers:view_ind_775_3&styles=&bbox=2641758.46955152,1428695.35991733,7243690.14023392,5456938.51107795&width=768&height=672&srs=EPSG:3035&format=application/openlayers

▼ Gender gap by age group

Gender gap in age group 15-24



Gender gap in age group 25-34



Gender gap in age group 35-44



Text delimited  (42.3 KB)

Shape format  (341.2 KB)



DB Portal – keep the data up-to-date?

- Base indicators

- Eurostat as main data source, national data as complement, estimation of missing data
- Updating strategy : implementing a semi-automatic procedure
- Change detection – gap filling – consistency checks (spatial, thematic) – outlier detection

- Project indicators

- No update : data as of Final Report (end of project)
- For 2020 Projects : genealogy and methodology described, possibility to recompute indicators

Methodology (LinkPAs - Proportion of Protected Areas)

The percentage was calculated by the background indicators of protected area by NUTS3-region (Numerator) and the total area by NUTS3- region (Denominator). As Protected Areas were considered all areas from the "Nationally designated areas" (2017) and Natura 2000 sites (2016), downloaded from the database of the European Environment Agency...

