

ESPON Seminar  
Lillehammer, Norway  
10 – 11 May 2004



## ***Reflecting ESPON typologies from an Austrian perspective***

Thomas Dax  
Roland Arbter  
Bundesanstalt für Bergbauernfragen, Wien  
Bundeskanzleramt, Wien  
[thomas.dax@babf.bmlf.gv.at](mailto:thomas.dax@babf.bmlf.gv.at)  
[roland.arbter@bka.gv.at](mailto:roland.arbter@bka.gv.at)

---

### **Core issues of spatial development assessment**

- Topographical situation – mountain areas and rising awareness on environmental integration
- Urban-rural interrelation at different levels – assessment of typologies against intra / inter-regional analysis
- Differentiation of employment development – spatial patterns on regional trends

## (1) Topography and spatial patterns in Austria

- mountain areas (70% of area, 50% of population)
- environmental focus  
(resource use, biodiversity, cultural landscape)
- rural amenities and tourism
- land use pressure

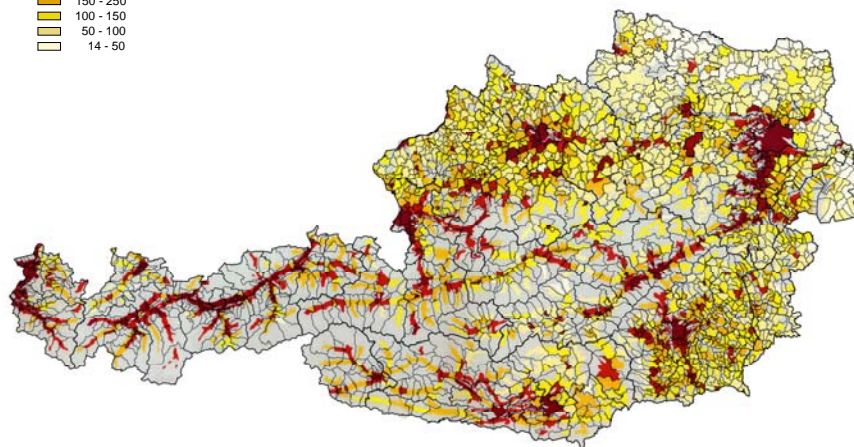
❖ ***Mountain areas, and other less favoured regions, are characterised by high internal variation of land use and settlement structure. The rising awareness of the ecological sensitivity highlights the pressure on some parts of these areas.***



## Population density by settlement area 2001

Inhabitants per km<sup>2</sup>  
settlement area

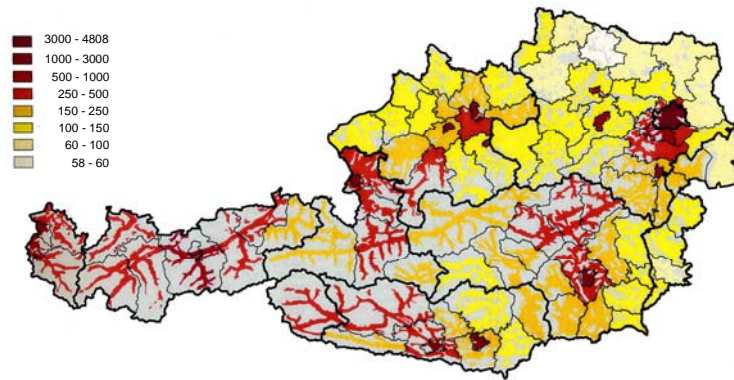
5000 - 6167
1000 - 5000
500 - 1000
250 - 500
150 - 250
100 - 150
50 - 100
14 - 50



Source: Statistik Austria, ÖROK 2004



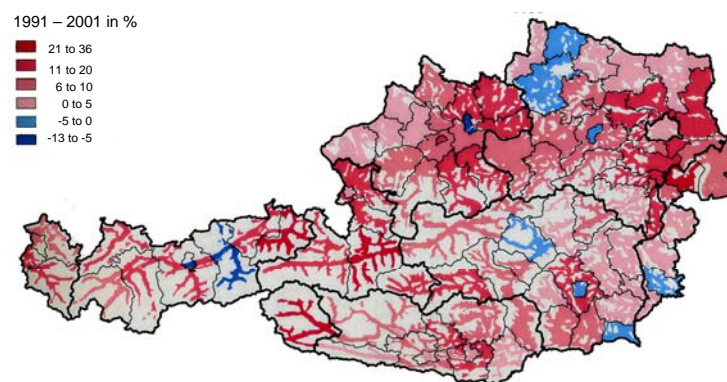
## Population density by settlement area 2001



Source: Statistik Austria, ÖROK 2004

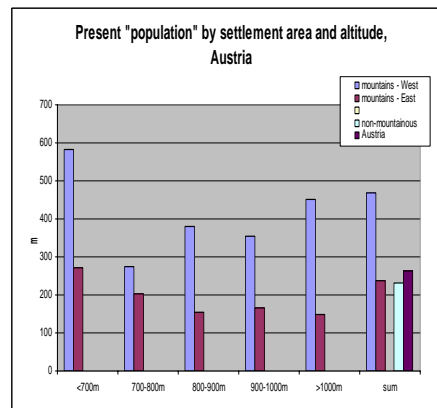


## Density change by settlement area 1991 - 2001



Source: Statistik Austria, ÖROK 2004

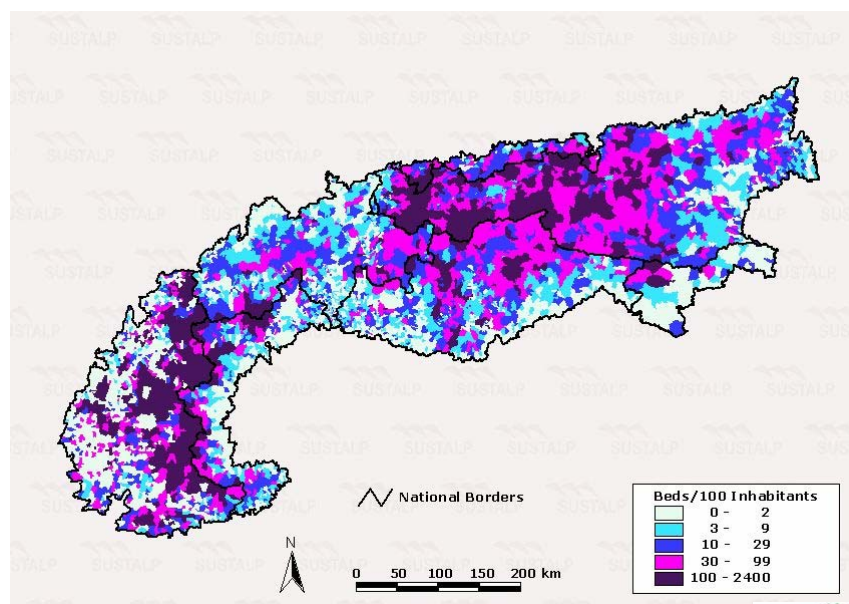




Source: Statistik Austria



## Tourism intensity in the Alps



Source: EURAK 2003



## (2) Interpretation of urban-rural typologies

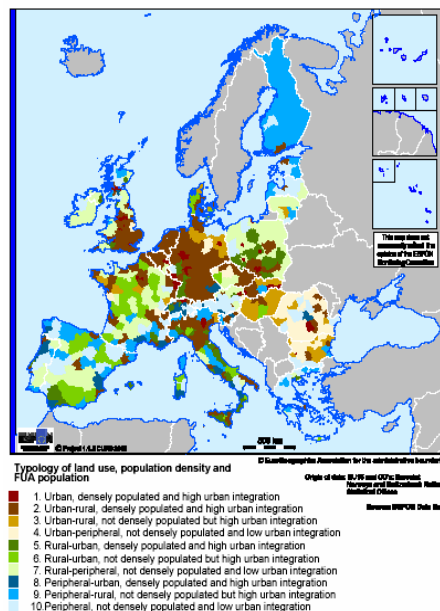
### urban-rural interrelation at different levels

- Administrative structure vs. settlement patterns
- Analysis within categories of typology (variance):  
population and employment development
- Labour market and commuting areas  
vs. land use typologies

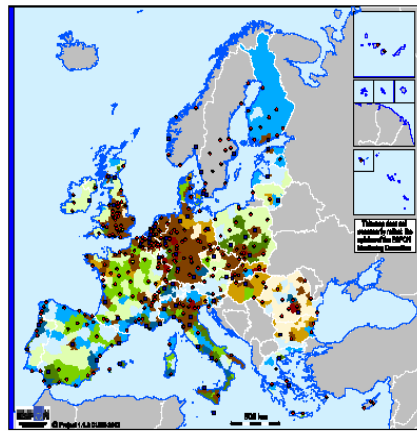
❖ ***The urban-rural typologies reflect urban size structure, density and land use. Results should be differentiated through refined analysis of intra/inter-regional trends.***



Map III: Urban-rural typology

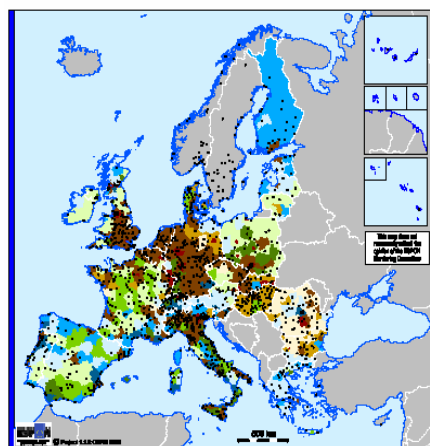


Map IV: Urban-rural typology and major cities



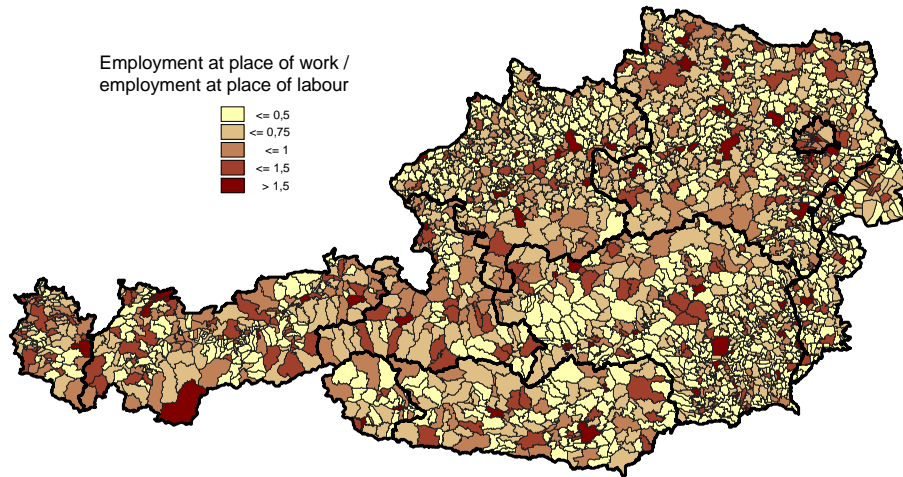
- Typology of land use, population density and FUA population
1. Urban, densely populated and high urban integration
  2. Urban-rural, densely populated and high urban integration
  3. Urban-rural, not densely populated but high urban integration
  4. Urban-peripheral, not densely populated and low urban integration
  5. Rural-urban, densely populated and high urban integration
  6. Rural-urban, not densely populated but high urban integration
  7. Rural-peripheral, not densely populated and low urban integration
  8. Peripheral-urban, densely populated and high urban integration
  9. Peripheral-rural, not densely populated but high urban integration
  10. Peripheral, not densely populated and low urban integration
- National or transnational level FUA  
 ■ European level FUA  
 ■ Global level FUA
- Origin of data: EU and other countries' statistical offices  
 Sources: EUROSTAT, Data from

Map V: Urban-rural typology and smaller cities



- Typology of land use, population density and FUA population
1. Urban, densely populated and high urban integration
  2. Urban-rural, densely populated and high urban integration
  3. Urban-rural, not densely populated but high urban integration
  4. Urban-peripheral, not densely populated and low urban integration
  5. Rural-urban, densely populated and high urban integration
  6. Rural-urban, not densely populated but high urban integration
  7. Rural-peripheral, not densely populated and low urban integration
  8. Peripheral-urban, densely populated and high urban integration
  9. Peripheral-rural, not densely populated but high urban integration
  10. Peripheral, not densely populated and low urban integration
- Regional or local level FUA
- Origin of data: EU and other countries' statistical offices  
 Sources: EUROSTAT, Data from

## Employment balance – place of work/place of residence 1991



Source: Statistik Austria



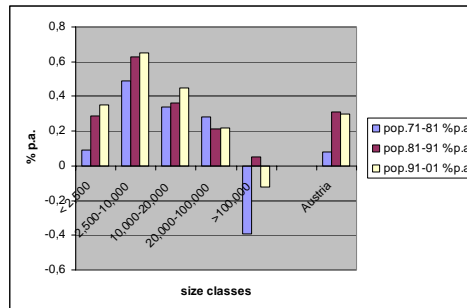
### (3) Differentiation of employment development required

- labour market participation (employment rates)
- gender specificities of labour market (changes)
- local/regional/national trends
- inter-relation of place of residence and place of work (commuting zones; differentiation by sex, age, educational level, skills)

❖ ***Regional trends have to be split up to components, addressing more detailed insight into causes of regional shifts.***



## Population development 1971-2001



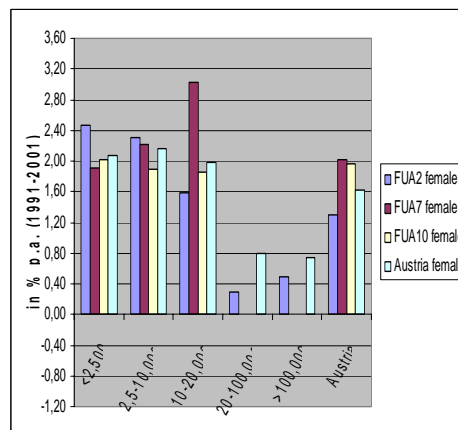
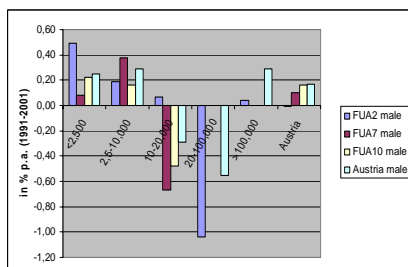
## Natural and migration balance 1991-2001



Source: Statistik Austria, BABF



## Employment change 1991-2001 by size classes of employment at place of labour and urban-rural typology

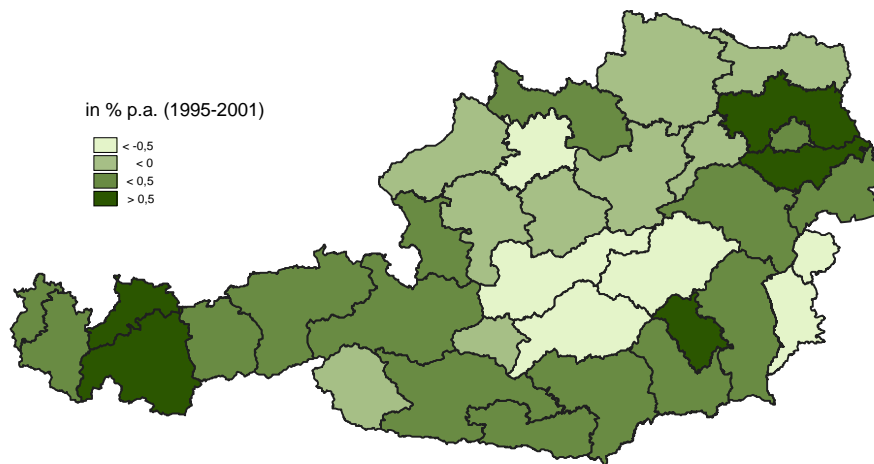


Source: Statistik Austria, ESPON, BABF





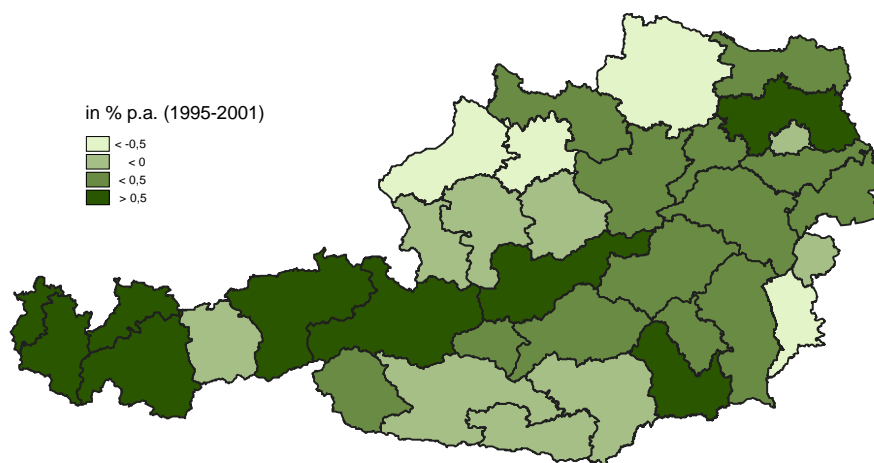
## Employment change, men 1995 - 2001



Source: Statistik Austria



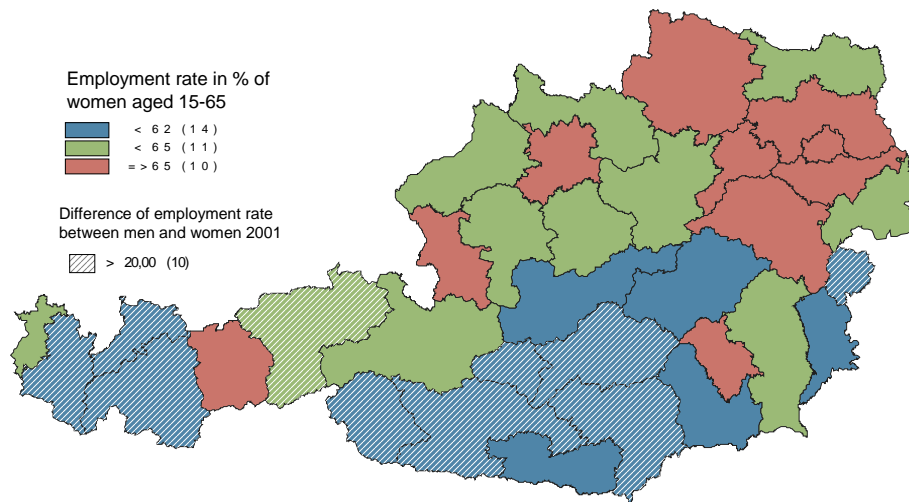
## Employment change, women 1995 - 2001



Source: Statistik Austria



## Employment rate, women, 2001



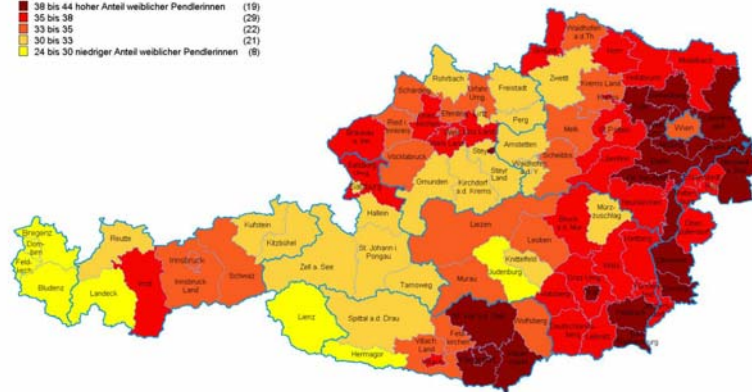
Source: Statistik Austria, BABF



## Commuting pattern, women 2001

Zahl der Frauen an allen lohnsteuerpflichtig beschäftigten Frauen, die Pendlerpauschale in Anspruch nehmen in %, O-Schnitt 34,5

- 38 bis 44 hoher Anteil weiblicher Pendlerinnen (19)
- 35 bis 38 (29)
- 33 bis 35 (22)
- 30 bis 33 (21)
- 24 bis 30 niedriger Anteil weiblicher Pendlerinnen (8)



Statistik Austria, Lohnsteuerstatistik 2001

